

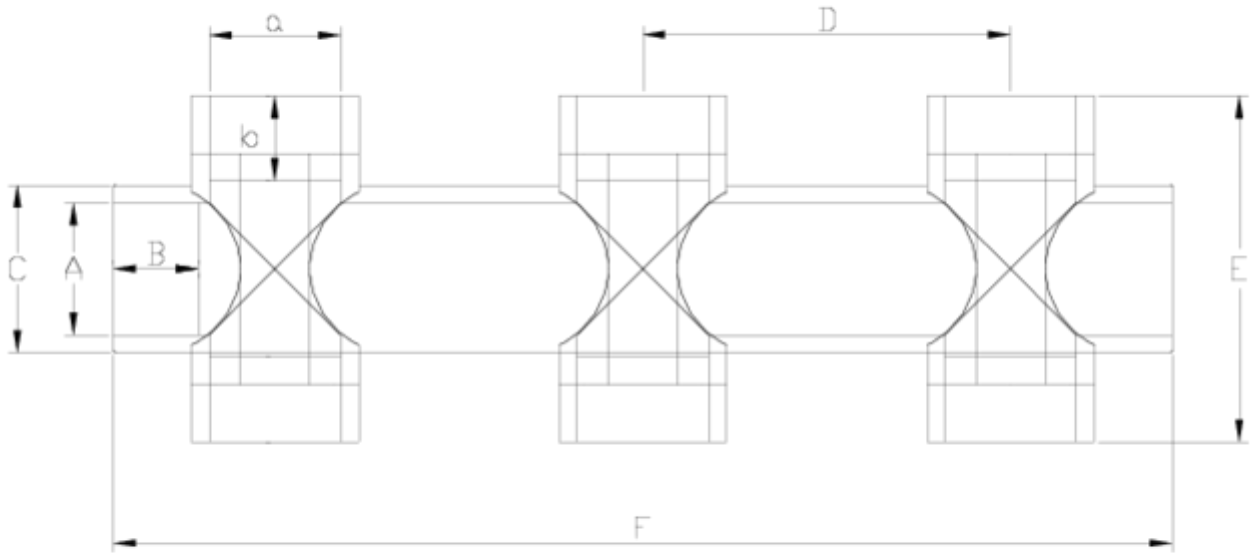


## PVC-U pressure fittings

# 6-way manifold female threaded ITEM 761

REFERENCE	DESCRIPTION	Net weight	Volumen (m <sup>3</sup> )	Gross weight	Unidades lote
1002387	MANIFOLD 6 WAY FEMALE THR. 1"-1"	0,6783	0,01553	7,11	10
1002389	MANIFOLD 6 WAY FEMALE THR. 2"-1 1/2"	0,727	0,03648	0	2
1002390	MANIFOLD 6 WAY FEMALE THR. 2"-2"	1,9741	0,03648	4,58	2





## ITEM 761 | 6-way manifold female threaded

Código	A-a	Peso (g)	b	B	C	D	E	F	PN	ROSCA
02387	1" -1"	575	22	22	40	115	78	308	PN10	BSP
02389	2"-1 1/2"	1325	21	38	75	165	115	460	PN10	BSP
02390	2"-2"	1440	26	38	75	165	115	460	PN10	BSP



## Product Documents



## Product Certificates



## Company Certificates

