



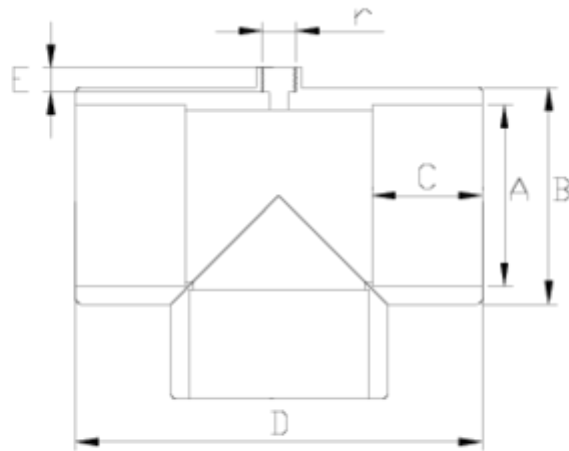
PVC-U pressure fittings

"Air" tee

ITEM 917

| REFERENCE | DESCRIPTION | Net weight | Volumen (m ³) | Gross weight | Unidades lote |
|-----------|------------------------------------|------------|---------------------------|--------------|---------------|
| 1001523 | "AIR" 90° TEE SOLV. SOCKET 90-3/4" | 0,97942 | 0,04717 | 10,436 | 10 |
| 1001524 | "AIR" 90° TEE SOLV. SOCKET 90-1" | 0.96762 | 0.04717 | 10.318 | 10 |
| 1001525 | "AIR" 90° TEE SOLV. SOCKET 110-1" | 1,732 | 0,06149 | 14,7765 | 8 |
| 1001526 | "AIR" 90° TEE SOLV. SOCKET 125-1" | 3,392 | 0,06347 | 17,79 | 5 |
| 1001531 | "AIR" 90° TEE SOLV. SOCKET 160-2" | 3,985 | 0,08677 | 12,58 | 3 |
| 1001532 | "AIR" 90° TEE SOLV. SOCKET 200-2" | 6,644 | 0,04717 | 7,28 | 1 |





ITEM 917 | "Air" tee

| Código | A-r | Peso (g) | B | C | D | E | PN | MEDIDA |
|--------|--------|----------|-----|-----|-----|----|------|---------|
| 01525 | 110-1" | 1465 | 131 | 61 | 238 | 22 | PN16 | MÉTRICO |
| 01526 | 125-1" | 2169 | 148 | 69 | 277 | 22 | PN16 | MÉTRICO |
| 01531 | 160-2" | 3668 | 182 | 86 | 348 | 38 | PN10 | MÉTRICO |
| 01532 | 200-2" | 6600 | 226 | 106 | 408 | 38 | PN10 | MÉTRICO |



Product Documents



Product Certificates



Company Certificates

