

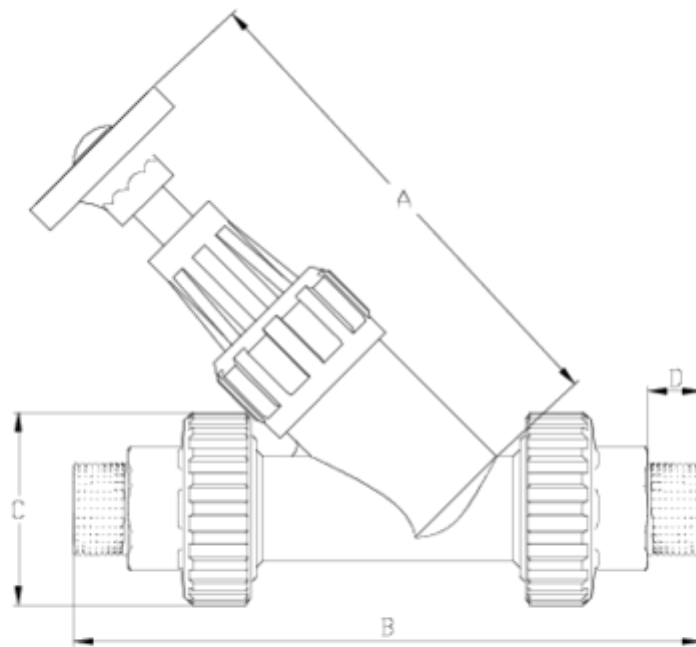


## Angle seat valves and filters

# Angle seat valve, male threaded outlet ITEM 448

REFERENCE	DESCRIPTION	Net weight	Volumen (m <sup>3</sup> )	Gross weight	Unidades lote
1021031	ANGLE SEAT V. MALE THREAD OUTLET 1/2"	0,271	0,03648	3,41	10
1021032	ANGLE SEAT V. MALE THREAD OUTLET 3/4"	0,404	0,03648	4,74	10
1021033	ANGLE SEAT V. MALE THREAD OUTLET 1"	0,60875	0,03648	7,49	10





## ITEM 448 | Angle seat valve, male threaded outlet

CÓDIGO	f	DN	Peso (g)	A	B	C	D	PN	TIPO ROSCA
21031	1/2"	15	271	146	170	52	14	PN16	BSP
21032	3/4"	20	404	173	196	59	16	PN16	BSP
21033	1"	25	601	195	223	69	19	PN16	BSP



## Product Documents



## Product Certificates

## Company Certificates

