



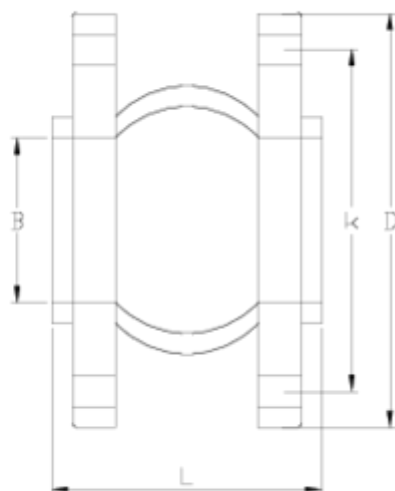
## Flanges and adaptors

# ANTI-VIBRATION SLEEVE

## ITEM 914

REFERENCE	DESCRIPTION	Net weight	Volumen (m <sup>3</sup> )	Gross weight	Unidades lote
1010600	FLANGED EXPANSION JOINT PN10/PN16 63	3,9206	0,00891	4,108	1
1010601	FLANGED EXPANSION JOINT PN10/PN16 75	5,2129	0,00472	5,33	1
1010602	FLANGED EXPANSION JOINT PN10/PN16 90	6,364	0,00520	6,364	1
1010603	FLANGED EXPANSION JOINT PN10/PN16 110	7,422	0,00810	7,422	1
1010604	FLANGED EXPANSION JOINT PN10/PN16 140	10,955	0,01031	10,955	1
1010605	FLANGED EXPANSION JOINT PN10/PN16 160	13,625	0,01462	13,625	1
1010606	EPDM FLANGED EXPANSION JOINT PN10 200	17,63	0,02428	17,63	1
1010607	EPDM FLANGED EXPANSION JOINT PN10 250	25,005	0,03745	25,005	1
1010608	EPDM FLANGED EXPANSION JOINT PN10 315	28,03	0,05050	28,03	1
1010616	EPDM FLANGED EXPANSION JOINT PN16 200	19,102	0,02428	19,102	1
1010617	EPDM FLANGED EXPANSION JOINT PN16 250	25,303	0,03937	25,303	1
1010618	EPDM FLANGED EXPANSION JOINT PN16 315	37	0,05396	39	1





## ITEM 914 | ANTI-VIBRATION SLEEVE

Código	A	Peso (g)	B	L	D	k	N	DN	PN
10600	63	3000	52	105	165	125	4	50	PN10/16
10601	75	5500	68	115	185	145	4	65	PN10/16
10602	90	6500	76	130	200	160	8	80	PN10/16
10603	110	7500	103	135	220	180	8	100	PN10/16
10604	140	10500	128	165	250	210	8	125	PN10/16
10605	160	13000	152	180	285	240	8	150	PN10/16
10606	200	18000	194	210	340	295	8	200	PN10
10616	200	18500	194	210	340	295	12	200	PN16
10607	250	26600	250	240	395	350	12	250	PN10
10617	250	28000	250	240	405	355	12	250	PN16



## ITEM 914 | ANTI-VIBRATION SLEEVE

10608	315	37000	300	255	445	400	12	300	<b>PN10</b>
10618	315	39500	300	255	460	410	12	300	<b>PN16</b>



## Product Documents



## Product Certificates



## Company Certificates

