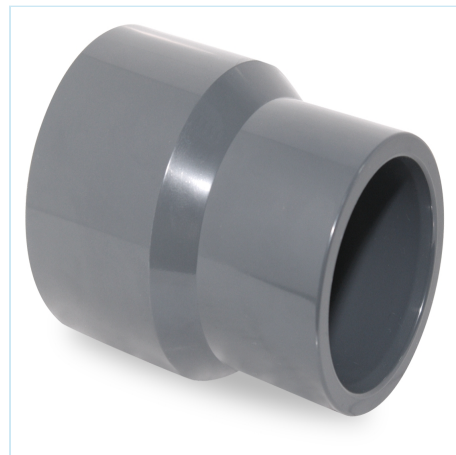


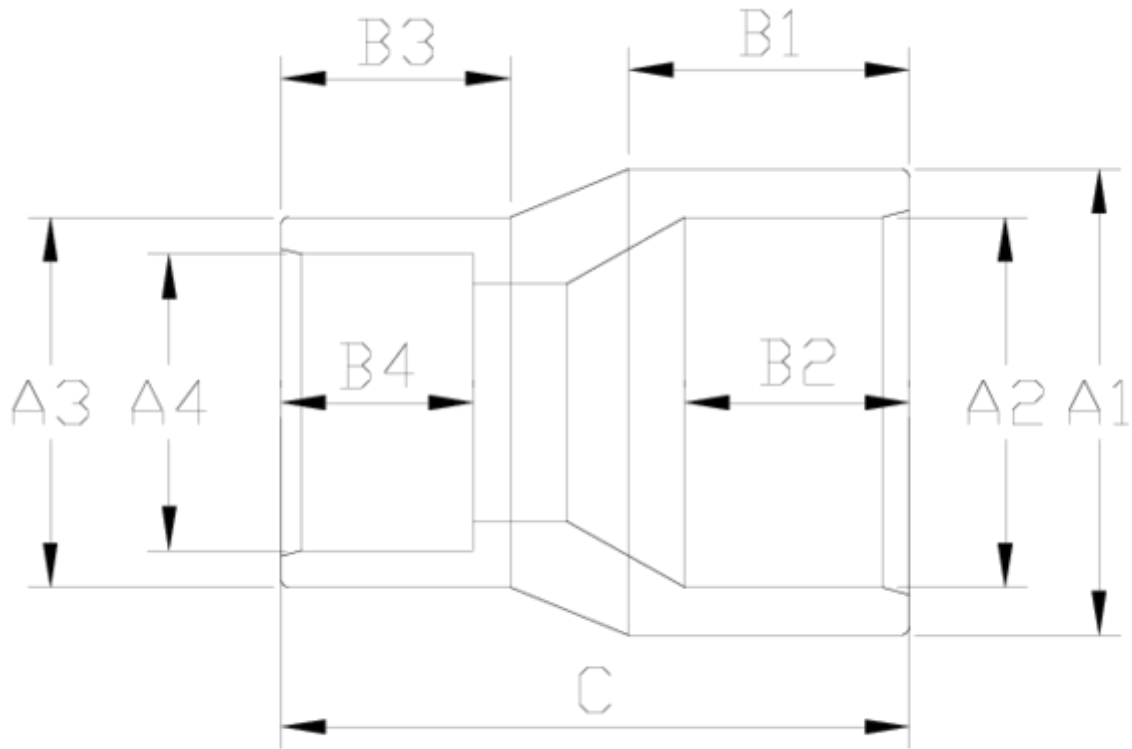


PVC-U pressure fittings

Conical reduction female - male ITEM 545



| REFERENCE | DESCRIPTION | Net weight | Volumen (m ³) | Gross weight | Unidades lote |
|-----------|--------------------------------------|------------|---------------------------|--------------|---------------|
| 1001772 | CONICAL RED. FEMALE-MALE 40X32X32X25 | 0,032283 | 0,01553 | 3,555 | 100 |
| 1001773 | CONICAL RED. FEMALE-MALE 50X40X40X32 | 0,057173 | 0,02244 | 6,205 | 100 |
| 1001774 | CONICAL RED. FEMALE-MALE 63X50X50X40 | 0,109651 | 0,02244 | 7,615 | 65 |
| 1001775 | CONICAL RED. FEMALE-MALE 75X63X63X50 | 0,1636 | 0,03129 | 6,365 | 35 |



ITEM 545 | Conical reduction female - male

| Codigo | A1/A2/A3/A4 | Peso (g) | B1 | B2 | B3 | B4 | C | PN | MEDIDA |
|--------|-------------|----------|----|----|----|----|----|------|---------|
| 01103 | 40/32/32/25 | 32 | 26 | 22 | 22 | 19 | 55 | PN16 | MÉTRICO |
| 01104 | 50/40/40/32 | 57 | 31 | 26 | 26 | 22 | 66 | PN16 | MÉTRICO |
| 01105 | 63/50/50/40 | 110 | 38 | 31 | 31 | 26 | 80 | PN16 | MÉTRICO |
| 01106 | 75/63/63/50 | 165 | 44 | 38 | 38 | 31 | 93 | PN16 | MÉTRICO |



Product Documents



Product Certificates



Company Certificates

