



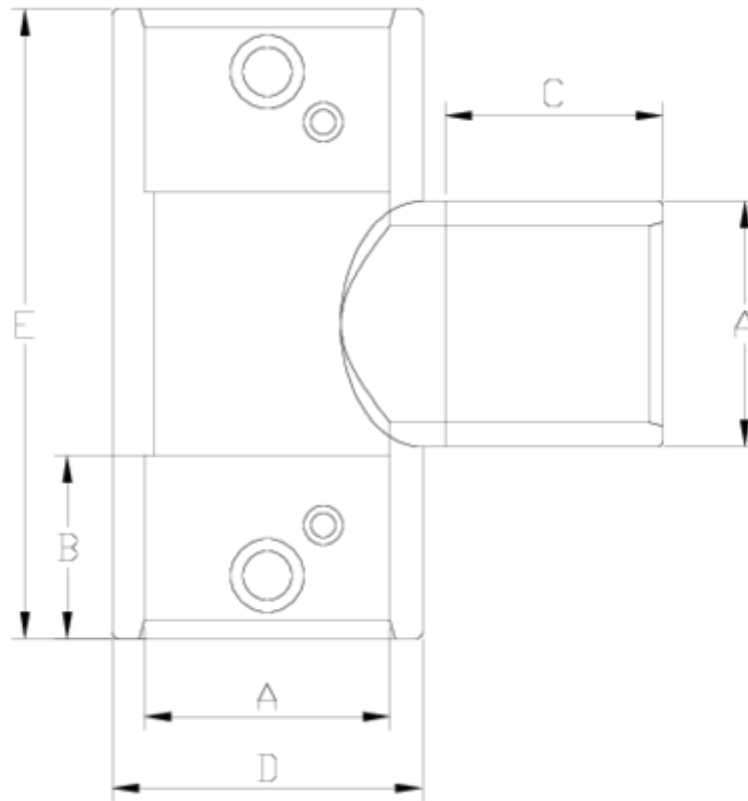
Electrofusion fittings/Welding fittings

Electrofusion tee

ITEM 162

| REFERENCE | DESCRIPTION | Net weight | Volumen (m ³) | Gross weight | Unidades lote |
|-----------|-----------------------|------------|---------------------------|--------------|---------------|
| 1019073 | ELECTROFUSION TEE 32 | 0,08433 | 0,01553 | 1,17 | 10 |
| 1019074 | ELECTROFUSION TEE 40 | 0,17433 | 0,01553 | 2,07 | 10 |
| 1019075 | ELECTROFUSION TEE 50 | 0,21266 | 0,01553 | 1,39 | 5 |
| 1019076 | ELECTROFUSION TEE 63 | 0,47766 | 0,01553 | 2,715 | 5 |
| 1019077 | ELECTROFUSION TEE 75 | 0,66072 | 0,04717 | 7,249 | 10 |
| 1019078 | ELECTROFUSION TEE 90 | 1,001025 | 0,04717 | 8,65 | 8 |
| 1019079 | ELECTROFUSION TEE 110 | 1,708883 | 0,08678 | 11,275 | 6 |
| 1019080 | ELECTROFUSION TEE 125 | 2,422375 | 0,06150 | 10,61 | 4 |
| 1019082 | ELECTROFUSION TEE 160 | 4,1061 | 0,08678 | 13,34 | 3 |





ITEM 162 | Electrofusion tee

| Código | f tubo-A | Peso (g) | B | C | D | E | PN | MEDIDA |
|--------|----------|----------|----|-----|-----|-----|------|---------|
| 19073 | 32 | 115 | 38 | 50 | 44 | 110 | PN16 | MÉTRICO |
| 19074 | 40 | 176 | 45 | 54 | 54 | 133 | PN16 | MÉTRICO |
| 19075 | 50 | 268 | 47 | 60 | 65 | 151 | PN16 | MÉTRICO |
| 19076 | 63 | 429 | 57 | 67 | 80 | 177 | PN16 | MÉTRICO |
| 19077 | 75 | 597 | 58 | 72 | 95 | 196 | PN16 | MÉTRICO |
| 19078 | 90 | 910 | 70 | 85 | 110 | 240 | PN16 | MÉTRICO |
| 19079 | 110 | 1420 | 82 | 90 | 139 | 282 | PN16 | MÉTRICO |
| 19080 | 125 | 2200 | 88 | 95 | 159 | 315 | PN16 | MÉTRICO |
| 19082 | 160 | 4893 | 92 | 103 | 196 | 325 | PN16 | MÉTRICO |



Product Documents



Product Certificates

Company Certificates

