



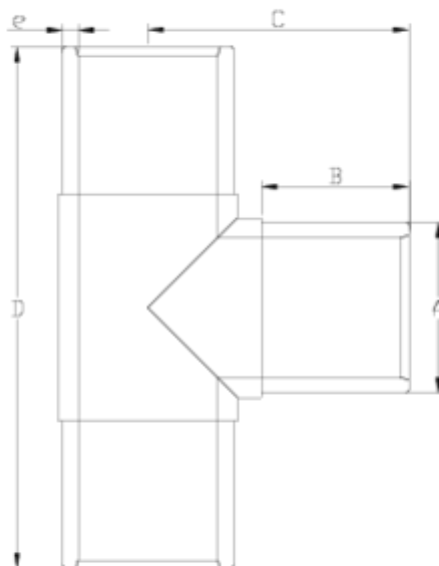
## Electrofusion fittings/Welding fittings

# Injected 90° tee

## ITEM 425

REFERENCE	DESCRIPTION	Net weight	Volumen (m <sup>3</sup> )	Gross weight	Unidades lote
1019425	INJECTED 90° TEE 63	0,3429	0,03682	6,035	16
1019426	INJECTED 90° TEE 75	0,5997	0,03682	7,333	12
1019427	INJECTED 90° TEE 90	0,8445	0,04717	9,365	10
1019428	INJECTED 90° TEE 110	1,4908	0,08677	16,888	10
1019429	INJECTED 90° TEE 125	2,1535	0,08678	18,25	8
1019430	INJECTED 90° TEE 140	2,9317	0,08678	15,68	5
1019431	INJECTED 90° TEE 160	4,1594	0,08678	13,5	3
1019432	INJECTED 90° TEE 180	6,23	0,06347	13,36	2
1019433	INJECTED 90° TEE 200	8,1	0,03648	8,1	1
1019434	INJECTED 90° TEE 225	10,07	0,06150	11,05	1
1019435	INJECTED 90° TEE 250	14,04	0,08677	14,715	1
1019436	INJECTED 90° TEE 280	21,88	0,00000	21,88	1
1019437	INJECTED 90° TEE 315	28,77	0,00000	28,77	1





## ITEM 425 | Injected 90° tee

Código	f tubo-A	Peso (g)	B	C	D	e	PN	MEDIDA
19425	63	375	70	114	228	5.8	PN16	MÉTRICO
19426	75	616	73	120	240	6.8	PN16	MÉTRICO
19427	90	1031	86	153	306	8.2	PN16	MÉTRICO
19428	110	1660	95	168	336	10	PN16	MÉTRICO
19429	125	2215	100	177	354	11.4	PN16	MÉTRICO
19430	140	3200	105	193	386	12.7	PN16	MÉTRICO
19431	160	4320	124	225	450	14.6	PN16	MÉTRICO
19432	180	5980	119	233	466	16.4	PN16	MÉTRICO
19433	200	7760	127	251	502	18.2	PN16	MÉTRICO
19434	225	10485	138	272	544	20.5	PN16	MÉTRICO



## ITEM 425 | Injected 90° tee

19435	250	14780	148	314	628	22.7	PN16	MÉTRICO
19436	280	18670	160	346	692	25.4	PN16	MÉTRICO
19437	315	26150	170	380	760	28.6	PN16	MÉTRICO



## Product Documents



## Product Certificates

## Company Certificates

