



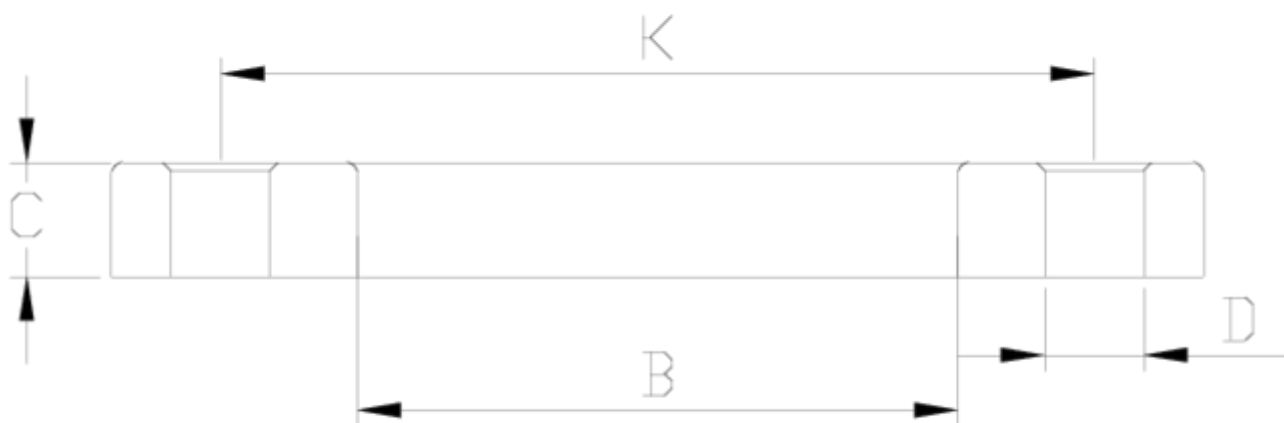
## Flanges and adaptors

# Brida maciza PA. alta resistencia para PVC

## ITEM 067



REFERENCE	DESCRIPTION	Net weight	Volumen (m <sup>3</sup> )	Gross weight	Unidades lote
1010075	P.A. COMP. FLANGE HIGH RESIS. 140*125	0,926	0,03129	13,524	20
1010200	P.A. COMPACT FLANGE HIGH RESIST. 50	0,357444	0,02244	17,645	48
1010201	P.A. COMPACT FLANGE HIGH RESIST. 63	0,181244	0,02244	6,65	34
1010202	P.A. COMPACT FLANGE HIGH RESIST. 75	0,547425	0,03682	22,4452	40
1010203	P.A. COMPACT FLANGE HIGH RESIST. 90	0,581313	0,03682	19,175	32
1010204	P.A. COMPACT FLANGE HIGH RESIST. 110	0,735564	0,02281	21,145	28
1010205	P.A. COMPACT FLANGE HIGH RESIST. 125	0,217633	0,00891	5,865	24
1010206	P.A. COMPACT FLANGE HIGH RESIST. 140	0,280005	0,03129	6,33	20
1010207	P.A. COMPACT FLANGE HIGH RESIST. 160	1,3052	0,03129	13,625	10
1010208	P.A. COMPACT FLANGE HIGH RESIST. 200	1,15658	0,03682	8,6453	7
1010209	P.A. COMP. FLANGE HIGH RESIS. 200-PN10	1,831543	0,03682	13,37	7
1010210	P.A. COMPACT FLANGE HIGH RESIST. 225	1,6673	0,02244	2,155	1
1010211	P.A. COMPACT FLANGE HIGH RESIST. 250	2,14	0,04717	2,14	1
1010212	P.A. COMPACT FLANGE HIGH RESIST. 315	3,42	0,00793	3,42	1



## ITEM 067 | Brida maciza PA. alta resistencia para PVC

Código	f	Peso (g)	B	K	C	D	PN	MEDIDA
10200	50	237.57983193277	62	110	20	4x18	PN16	MÉTRICO
10201	63	281.38095238095	78	125	20	4x18	PN16	MÉTRICO
10202	75	382.8	92	145	22	4x18	PN16	MÉTRICO
10203	90	482.70857142857	110	146-160	24	8x18	PN16	MÉTRICO
10204	110	619.01224489796	133	178-190	26	8x18	PN16	MÉTRICO
10205	125	619.42360248447	149	190	27	8x18	PN16	MÉTRICO
10075	140x125	905.23788819876	149	210-216	27	8x18	PN16	MÉTRICO
10206	140	718.41923076923	167	210-216	29	8x18	PN16	MÉTRICO
10207	160	936.13775510204	190	235-241	30	8x22	PN10	MÉTRICO
10208	200	980.4	227	270	30	8x22	PN6	MÉTRICO



## ITEM 067 | Brida maciza PA. alta resistencia para PVC

10209	200-PN10	1256.9857142857	235	292-298	34	8x22	<b>PN10</b>	MÉTRICO
10210	225	1025	249	292-298	34	8x22	<b>PN10</b>	MÉTRICO
10211	250	2082.5357142857	285	350-356	34	12x22	<b>PN10</b>	MÉTRICO
10212	315	2354.2357142857	350	400-432	34	12x22	<b>PN6</b>	MÉTRICO



## Product Documents



## Product Certificates



## Company Certificates

