



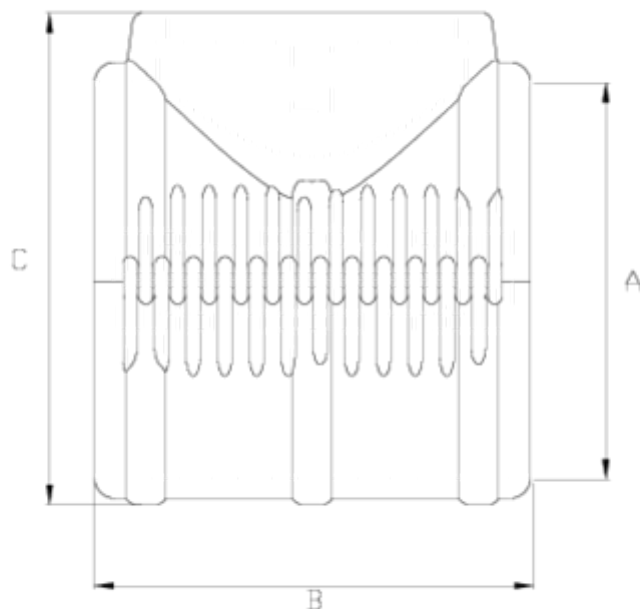
## GRPP hinged sleeve

# Hinged clamp saddle body

## ITEM 139

REFERENCE	DESCRIPTION	Net weight	Volumen (m <sup>3</sup> )	Gross weight	Unidades lote
1005029	HINGED SLEEVE BODY 225	2,97995	0,04836	6,625	2
1005030	HINGED CLAMP SADDLES BODY 250	3,40995	0,04836	7,485	2
1005031	HINGED CLAMP SADDLES BODY 315	5,8647	0,04880	6,315	1
1005089	HINGED CLAMP SADDLES BODY 160	2,508	0,03648	5,61	2
1005090	HINGED CLAMP SADDLES BODY 200	2,61755	0,04460	5,965	2
1005091	HING. CLAMP SADDLE BODY 400 STAND OUT.	6,1931	0,06347	6,98	1
1005092	HING. CLAMP SADDLE BODY 400 (140-160 OUT)	6,0381	0,06879	6,6318	1
1005093	HING. CLAMP SADDLE BODY 315 (140-160 OUT)	5,7631	0,04879	6,55	1





## ITEM 139 | Hinged clamp saddle body

CÓDIGO	f tubo	PESOS	A	B	C	PN	MEDIDA
05089	160	2642	160	225	216	PN6	MÉTRICO
05090	200	2700	200	227	250	PN6	MÉTRICO
05029	225	2983	225	225	274	PN6	MÉTRICO
05030	250	3354	250	239	299	PN6	MÉTRICO
05031	315	4606	315	250	361	PN6	MÉTRICO
05093	315	5150	315	282	390	PN6	MÉTRICO
05091	400	6327	400	282	456	PN6	MÉTRICO
05092	400	6450	400	282	450	PN6	MÉTRICO



## Product Documents



## Product Certificates

## Company Certificates

