



## GRPP hinged sleeve

# Hinged sleeve female threaded outlet ITEM 137



REFERENCE	DESCRIPTION	Net weight	Volumen (m <sup>3</sup> )	Gross weight	Unidades lote
1005014	HINGED SLEEVES FEM. THREAD 225-1 1/2"	3,6592	0,04836	8,007	2
1005015	HINGED SLEEVES FEM. THREAD 225-2"	3,009	0,04836	8,2	2
1005016	HINGED SLEEVES FEM. THREAD 225-2 1/2"	3,6332	0,04836	7,955	2
1005017	HINGED SLEEVES FEM. THREAD 225-3"	3,6707	0,04836	8,03	2
1005018	HINGED SLEEVES FEM. THREAD 225-4"	3,82565	0,04836	8,34	2
1005019	HINGED SLEEVES FEM. THREAD 250-1 1/2"	4,0512	0,04836	8,791	2
1005025	HINGED SLEEVES FEM. THREAD 315-2"	6,4079	0,04880	6,995	1
1005026	HINGED SLEEVES FEM. THREAD 315-2 1/2"	6,4829	0,04880	7,07	1
1005027	HINGED SLEEVES FEM. THREAD 315-3"	6,5629	0,04880	7,15	1
1005028	HINGED SLEEVES FEM. THREAD 315-4"	6,7729	0,04880	7,36	1
1005063	HINGED SLEEVES FEM. THREAD 250-1/2"	4,08545	0,04836	8,836	2
1005064	HINGED SLEEVES FEM. THREAD 250-3/4"	4,0632	0,04836	8,815	2
1005065	HINGED SLEEVES FEM. THREAD 250-1"	1,34	0,04836	8,775	2
1005066	HINGED SLEEVES FEM. THREAD 250-1 1/4"	4,06615	0,04836	8,821	2
1005068	HINGED SLEEVES FEM. THREAD 250-2"	4,1282	0,04836	8,945	2
1005069	HINGED SLEEVES FEM. THREAD 250-2 1/2"	4,05795	0,04836	8,781	2
1005070	HINGED SLEEVES FEM. THREAD 250-3"	4,08565	0,04836	8,86	2
1005071	HINGED SLEEVES FEM. THREAD 250-4"	4,2007	0,04836	9,09	2
1005072	HINGED SLEEVES FEM. THREAD 315-1 1/2"	6,4719	0,04880	7,059	1
1005200	HINGED SLEEVES FEM. THREAD 225-1/2"	3,68445	0,04836	8,034	2
1005201	HINGED SLEEVES FEM. THREAD 225-3/4"	3,509	0,04836	7,858	2
1005202	HINGED SLEEVES FEM. THREAD 225-1"	3,67145	0,04836	8,008	2
1005203	HINGED SLEEVES FEM. THREAD 225-1 1/4"	3,59565	0,04836	7,88	2



## GRPP hinged sleeve



## ITEM 137



REFERENCE	DESCRIPTION	Net weight	Volumen (m <sup>3</sup> )	contenido.Peso bruto	Unidades lote
1005210	HINGED SLEEVES FEM. THREAD 315-1/2"	6,5079	0,04880	7,095	1
1005211	HINGED SLEEVES FEM. THREAD 315-3/4"	6,5079	0,04880	7,095	1
1005212	HINGED SLEEVES FEM. THREAD 315-1"	6,4779	0,04880	7,065	1
1005213	HINGED SLEEVES FEM. THREAD 315-1/4"	6,4329	0,04880	7,02	1
1005360	HINGED SLEEVES FEM. THREAD 160-1/2"	3,26575	0,04460	7,285	2
1005361	HINGED SLEEVES FEM. THREAD 160-3/4"	3,34075	0,04460	7,435	2
1005362	HINGED SLEEVES FEM. THREAD 160-1"	3,20825	0,03648	7,01	2
1005363	HINGED SLEEVES FEM. THREAD 160-1/4"	3,129	0,04460	7,088	2
1005364	HINGED SLEEVES FEM. THREAD 160-1/2"	3,23075	0,04460	7,215	2
1005365	HINGED SLEEVES FEM. THREAD 160-2"	3,2687	0,03648	7,155	2
1005366	HINGED SLEEVES FEM. THREAD 160-2 1/2"	3,208	0,04460	7,246	2
1005367	HINGED SLEEVES FEM. THREAD 160-3"	3,19575	0,03648	7,145	2
1005368	HINGED SLEEVES FEM. THREAD 160-4"	3,443	0,04460	7,58	2
1005451	HINGED SLEEVES FEM. THREAD 200-1/2"	3,385	0,04460	7,5	2
1005452	HINGED SLEEVES FEM. THREAD 200-3/4"	3,3318	0,04460	7,417	2
1005453	HINGED SLEEVES FEM. THREAD 200-1"	3,35575	0,04460	7,465	2
1005454	HINGED SLEEVES FEM. THREAD 200-1/4"	3,16575	0,04460	7,085	2
1005455	HINGED SLEEVES FEM. THREAD 200-1/2"	3,353	0,04460	7,4	2
1005456	HINGED SLEEVES FEM. THREAD 200-2"	3,32325	0,04460	7,4	2
1005457	HINGED SLEEVES FEM. THREAD 200-2 1/2"	3,2358	0,04460	7,225	2
1005458	HINGED SLEEVES FEM. THREAD 200-3"	3,38325	0,04460	7,52	2
1005459	HINGED SLEEVES FEM. THREAD 200-4"	3,5375	0,04460	7,769	2
1005481	HINGED SLEEVES FEM. THREAD 400-1/2"	6,71	0,06347	7,54	1



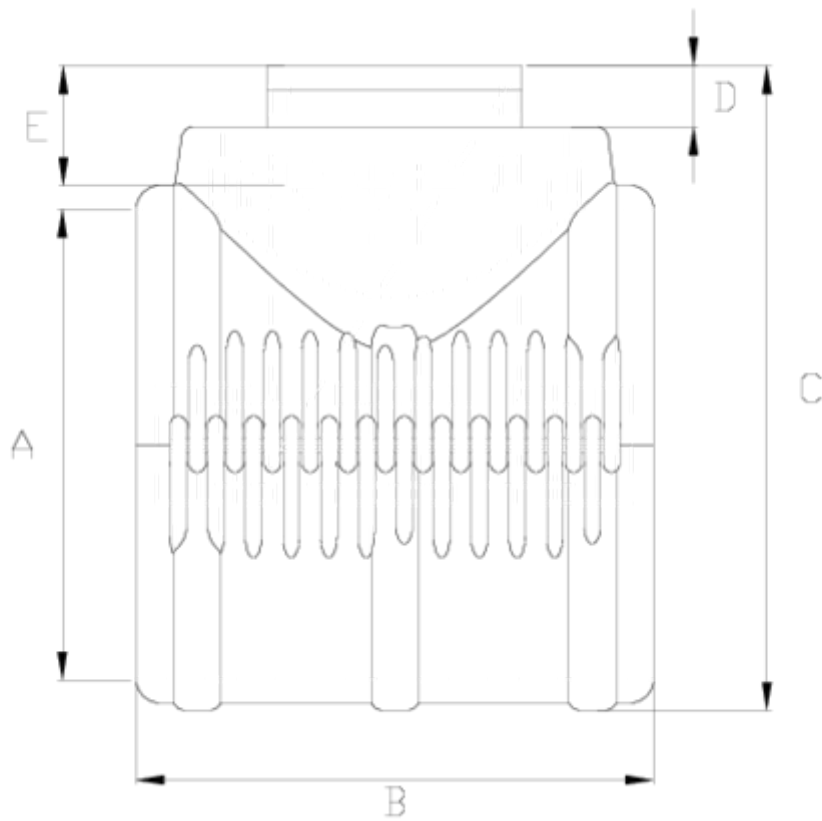
## GRPP hinged sleeve

# Hinged sleeve female threaded outlet ITEM 137



REFERENCE	DESCRIPTION	Net weight	Volumen (m <sup>3</sup> )	contenido.Peso bruto	Unidades lote
1005482	HINGED SLEEVES FEM. THREAD 400-3/4"	6,853	0,06347	7,753	1
1005483	HINGED SLEEVES FEM. THREAD 400-1"	6,73	0,06347	7,56	1
1005484	HINGED SLEEVES FEM. THREAD 400-1 1/4"	6,66	0,06347	7,49	1
1005485	HINGED SLEEVES FEM. THREAD 400-1 1/2"	6,794	0,06347	7,694	1
1005486	HINGED SLEEVES FEM. THREAD 400-2"	6,9563	0,06347	7,755	1
1005487	HINGED SLEEVES FEM. THREAD 400-2 1/2"	6,7963	0,06347	7,595	1
1005488	HINGED SLEEVES FEM. THREAD 400-3"	6,9213	0,06347	7,72	1
1005489	HINGED SLEEVES FEM. THREAD 400-4"	6,82	0,04879	7,61	1





## ITEM 137 | Hinged sleeve female threaded outlet

CÓDIGO	f tubo	f salida	PESOS	A	B	C	D	E	PN	TIPO ROSCA
05360	160	1/2"	3188	160	225	225	9	16	PN6	BSP
05361	160	3/4"	3168	160	225	225	9	19	PN6	BSP
05362	160	1"	3148	160	225	225	9	22	PN6	BSP
05363	160	1 1/4"	3129	160	225	225	9	26	PN6	BSP
05364	160	1 1/2"	3109	160	225	225	9	31	PN6	BSP
05365	160	2"	3172	160	225	232	16	38	PN6	BSP
05366	160	2 1/2"	3208	160	225	238	22	44	PN6	BSP
05367	160	3"	3203	160	225	245	29	51	PN6	BSP
05368	160	4"	3310	160	225	280	64	61	PN6	BSP
05451	200	1/2"	3246	200	227	259	9	16	PN6	BSP



## ITEM 137 | Hinged sleeve female threaded outlet

05452	200	3/4"	3226	200	227	259	9	19	PN6	BSP
05453	200	1"	3206	200	227	259	9	22	PN6	BSP
05454	200	1 1/4"	3187	200	227	259	9	26	PN6	BSP
05455	200	1 1/2"	3167	200	227	259	9	31	PN6	BSP
05456	200	2"	3230	200	227	266	16	38	PN6	BSP
05457	200	2 1/2"	3266	200	227	272	22	44	PN6	BSP
05458	200	3"	3261	200	227	279	29	51	PN6	BSP
05459	200	4"	3368	200	227	314	64	61	PN6	BSP
05200	225	1/2"	3529	225	225	283	9	16	PN6	BSP
05201	225	3/4"	3509	225	225	283	9	19	PN6	BSP
05202	225	1"	3489	225	225	283	9	22	PN6	BSP
05203	225	1 1/4"	3470	225	225	283	9	26	PN6	BSP
05014	225	1 1/2"	3450	225	225	283	9	31	PN6	BSP
05015	225	2"	3513	225	225	290	16	38	PN6	BSP
05016	225	2 1/2"	3549	225	225	296	22	44	PN6	BSP
05017	225	3"	3544	225	225	303	29	51	PN6	BSP
05018	225	4"	3651	225	225	338	64	61	PN6	BSP
05063	250	1/2"	3900	250	239	308	9	16	PN6	BSP
05064	250	3/4"	3880	250	239	308	9	19	PN6	BSP
05065	250	1"	3860	250	239	308	9	22	PN6	BSP
05066	250	1 1/4"	3841	250	239	308	9	26	PN6	BSP
05019	250	1 1/2"	3821	250	239	308	9	31	PN6	BSP
05068	250	2"	3884	250	239	315	16	38	PN6	BSP
05069	250	2 1/2"	3920	250	239	321	22	44	PN6	BSP
05070	250	3"	3915	250	239	328	29	51	PN6	BSP
05071	250	4"	4022	250	239	363	64	61	PN6	BSP

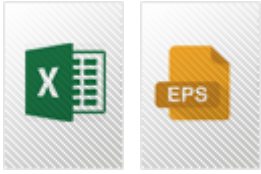


## ITEM 137 | Hinged sleeve female threaded outlet

05210	315	1/2"	5152	315	250	370	9	16	<b>PN6</b>	BSP
05211	315	3/4"	5132	315	250	370	9	19	<b>PN6</b>	BSP
05212	315	1"	5112	315	250	370	9	22	<b>PN6</b>	BSP
05213	315	1 1/4"	5093	315	250	370	9	26	<b>PN6</b>	BSP
05072	315	1 1/2"	5073	315	250	370	9	31	<b>PN6</b>	BSP
05025	315	2"	5136	315	250	377	16	38	<b>PN6</b>	BSP
05026	315	2 1/2"	5172	315	250	383	22	44	<b>PN6</b>	BSP
05027	315	3"	5167	315	250	390	29	51	<b>PN6</b>	BSP
05028	315	4"	5274	315	250	425	64	61	<b>PN6</b>	BSP
05481	400	1/2"	6873	400	282	474	9	16	<b>PN6</b>	BSP
05482	400	3/4"	6853	400	282	474	9	19	<b>PN6</b>	BSP
05483	400	1"	6833	400	282	474	9	22	<b>PN6</b>	BSP
05484	400	1 1/4"	6814	400	282	474	9	26	<b>PN6</b>	BSP
05485	400	1 1/2"	6794	400	282	474	9	31	<b>PN6</b>	BSP
05486	400	2"	6857	400	282	481	16	38	<b>PN6</b>	BSP
05487	400	2 1/2"	6893	400	282	487	22	44	<b>PN6</b>	BSP
05488	400	3"	6888	400	282	494	29	51	<b>PN6</b>	BSP
05489	400	4"	6995	400	282	529	64	61	<b>PN6</b>	BSP



## Product Documents



## Product Certificates

## Company Certificates

