



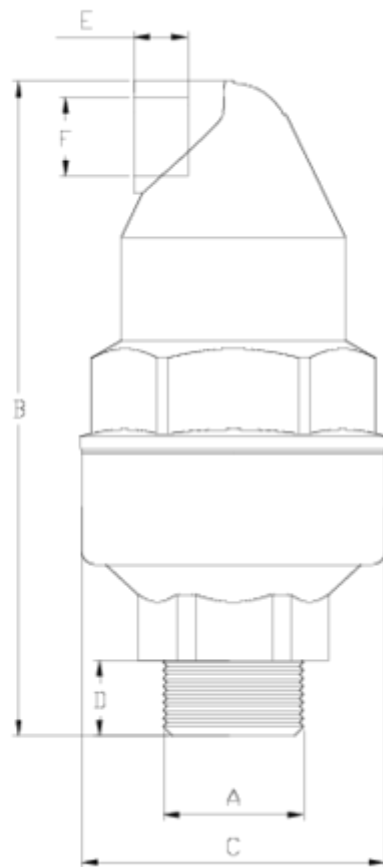
## Net air release valve

# Kinetic (C1) - PA

## ITEM 306

REFERENCE	DESCRIPTION	Net weight	Volumen (m <sup>3</sup> )	Gross weight	Unidades lote
1017501	NET® AIR VALVE 1/2" PA DOUBLE EFFECT	0,285	0,02244	6,24	20
1017502	NET® AIR VALVE 3/4" PA DOUBLE EFFECT	0,289	0,02244	6,32	20
1017503	"NET® AIR VALVE 1" PA DOUBLE EFFECT	0,3262	0,02244	7,012	20





## ITEM 306 | Kinetic (C1) - PA

Código	f A	Peso (g)	B	C	D	E	F	Material	PN	TIPO ROSCA
17001	1/2"	256.5	158	75	14	15	1/2"	PPFV	PN16	BSP
17002	3/4"	260.1	160	75	16	15	1/2"	PPFV	PN16	BSP
17003	1"	265.5	163	75	19	15	1/2"	PPFV	PN16	BSP
17501	1/2"	281.2	158	75	14	15	1/2"	PA	PN25	BSP
17502	3/4"	285.95	160	75	16	15	1/2"	PA	PN25	BSP
17503	1"	291.65	163	75	19	15	1/2"	PA	PN25	BSP



## Product Documents



## Product Certificates

## Company Certificates

