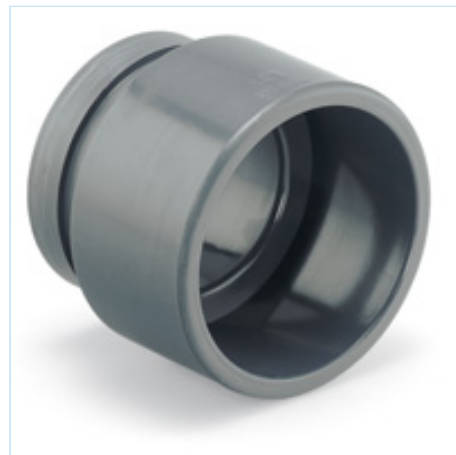


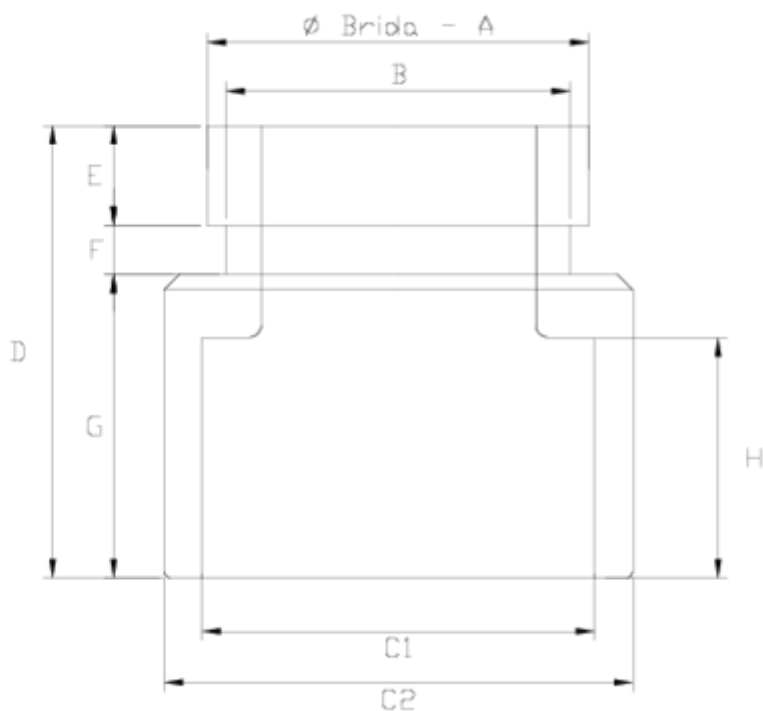


## Netvitc® coupling

# Netvitc® connection solvent socket ANSI outlet ITEM 924



REFERENCE	DESCRIPTION	Net weight	Volumen (m <sup>3</sup> )	Gross weight	Unidades lote
110N217	NETVITC COUPLING SOLV. SOCKET 2" ANSI	0,16613	0,00891	3,51	20
110N219	NETVITC COUPLING SOLV. SOCKET 3" ANSI	0,42562	0,02457	8,83	20
110N220	NETVITC COUPLING SOLV. SOCKET 4" ANSI	0,4677	0,03129	5,25	10



## ITEM 924 | Netvitc® connection solvent socket ANSI outlet

CÓDIGO	Ø BRIDA - A	C1	C2	PESO (g)	B	D	E	F	G	H	PN	MEDIDA
10N217	2"	2"	75	152	56	72	16	8	48	39	PN10	ANSI
10N219	3"	3"	110	320	81	88	16	11	62	52	PN10	ANSI
10N220	4"	4"	125	596	110	105	16	11	77	64	PN10	ANSI



## Product Documents



## Product Certificates

## Company Certificates

