

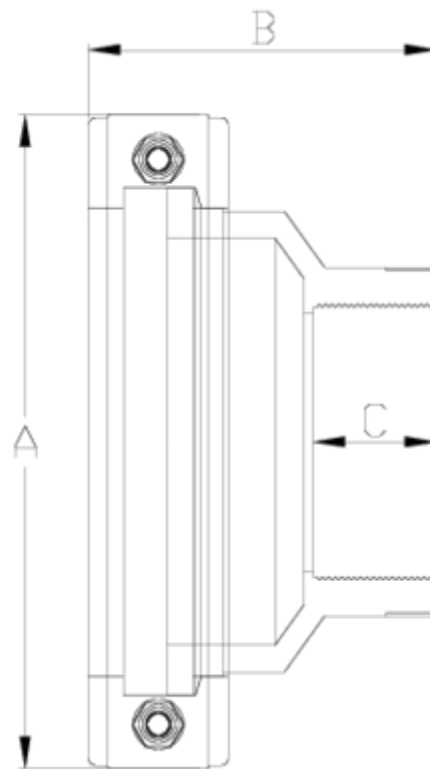


## Netvitc System® butterfly valves

# Reducing clamp and adaptor, female threaded outlet ITEM 181



REFERENCE	DESCRIPTION	Net weight	Volumen (m <sup>3</sup> )	Gross weight	Unidades lote
109N486	NET SYS CLAMP&ADAPT,F-F/OUT RED. 125-2 1/2"	1,046	0,01553	4,424	4
109N487	NET SYS CLAMP&ADAPT,F-F/OUT RED. 125-3"	0,982	0,01553	4,168	4
109N488	NET SYS CLAMP&ADAPT,F-F/OUT RED. 125-4"	1,063	0,01553	4,492	4



## ITEM 181 | Reducing clamp and adaptor, female treaded outlet

CÓDIGO	f	BRIDA	Pesos	A	B	C	PN	TIPO ROSCA
9N486	2 1/2"	125	1046	203	108	44	PN10	BSP
9N487	3"	125	982	203	108	51	PN10	BSP
9N488	4"	125	1063	203	108	62	PN10	BSP



## Product Documents



## Product Certificates

## Company Certificates

