



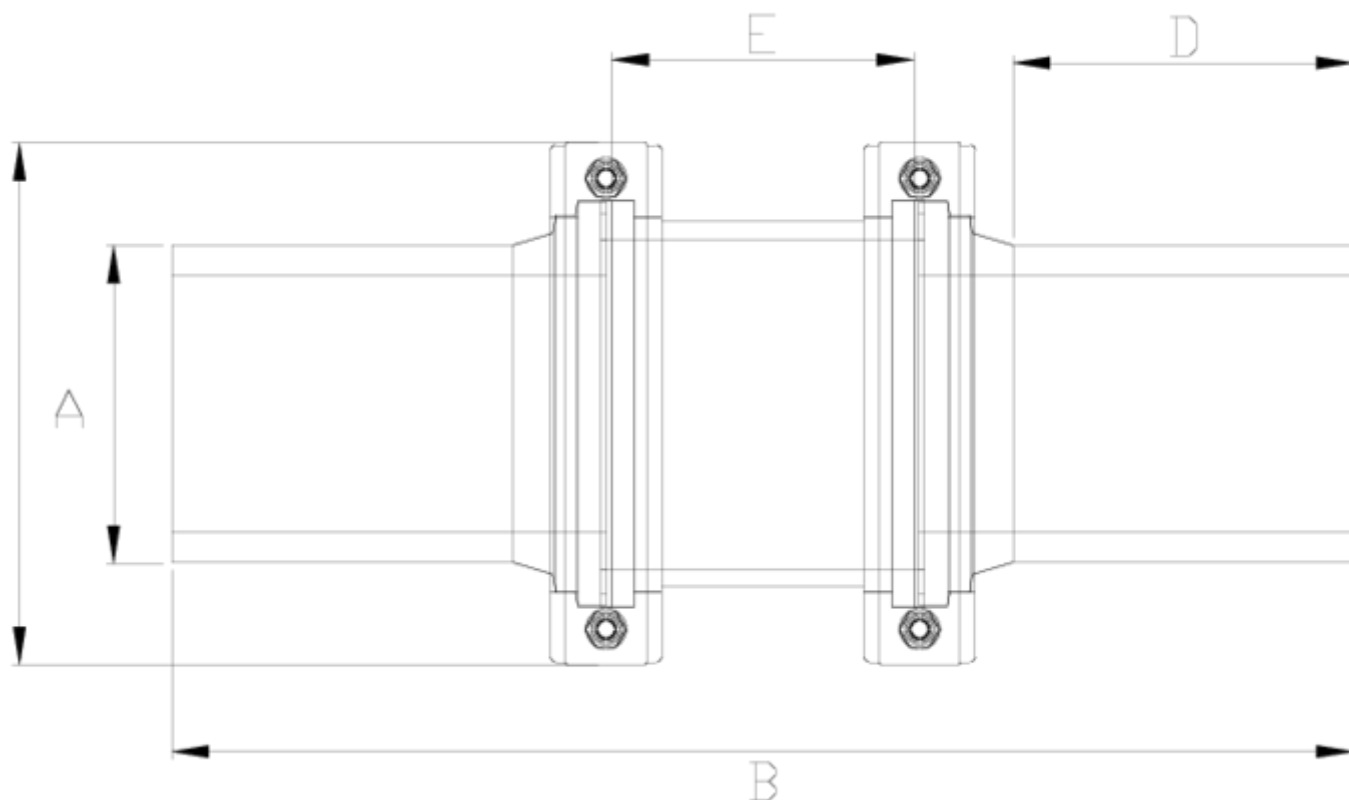
Netvitc System® fluid display

Fluid display, PE outlet

ITEM 090

REFERENCE	DESCRIPTION	Net weight	Volumen (m ³)	Gross weight	Unidades lote
1018045	FLUID DISPLAY OUTLET/PE 50	0,84	0,03129	8,854	10
1018046	FLUID DISPLAY OUTLET/PE 63	0,852	0,04879	9,1	10
1018048	FLUID DISPLAY OUTLET/PE 90	3,61865	0,04117	15,115	4
1018049	FLUID DISPLAY OUTLET/PE 110	3,1325	0,06347	13,36	4
1018050	FLUID DISPLAY OUTLET/PE 125	3,553	0,04460	7,8	2
1018051	FLUID DISPLAY OUTLET/PE 140	5,995	0,03129	12,55	2
1018052	FLUID DISPLAY OUTLET/PE 160	5,963	0,06879	12,9	2
1018053	FLUID DISPLAY OUTLET/PE 200	10,0783	0,08677	11,1	1
1018054	FLUID DISPLAY OUTLET/PE 225	10,555	0,06149	11,58	1





ITEM 090 | Fluid display, PE outlet

CÓDIGO	A	PESO (g)	BRIDA	B	C	D	E	PN	MEDIDA
18045	50	840	63	318	125	56	70	PN10	MÉTRICO
18046	63	830	63	308	125	89	70	PN10	MÉTRICO
18048	90	2800	125	402	203	100	122	PN10	MÉTRICO
18049	110	2920	125	404	203	101	122	PN10	MÉTRICO
18050	125	3390	125	466	203	135	122	PN10	MÉTRICO
18051	140	5995	160	517	251	98	137	PN10	MÉTRICO
18052	160	5965	160	483	251	122	137	PN10	MÉTRICO
18053	200	11065	200	620	297	132	210	PN10	MÉTRICO
18054	225	9585	200	622	297	243	210	PN10	MÉTRICO





Product Documents



Product Certificates

Company Certificates

