



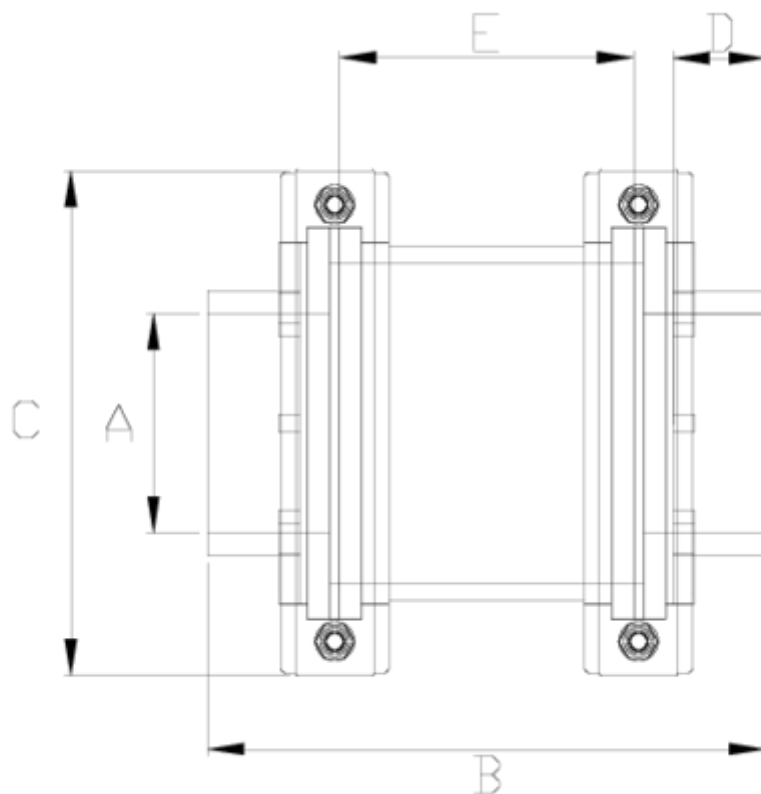
Netvitc System® fluid display

Fluid display, solvent socket outlet

ITEM 088



REFERENCE	DESCRIPTION	Net weight	Volumen (m ³)	Gross weight	Unidades lote
1018008	FLUID DISPLAY SOLV. SOCKET 90	2,8202	0,04117	11,921	4
1018004	FLUID DISPLAY SOLV. SOCKET 40	0,7379	0,03129	7,952	10
1018005	FLUID DISPLAY SOLV. SOCKET 50	0,7892	0,03129	8,465	10
1018006	FLUID DISPLAY SOLV. SOCKET 63	0,7502	0,03129	8,075	10
1018007	FLUID DISPLAY SOLV. SOCKET 75	0,93058	0,03682	9,855	10
1018009	FLUID DISPLAY SOLV. SOCKET 110	2,98475	0,04117	12,579	4
1018010	FLUID DISPLAY SOLV. SOCKET 125	3,04865	0,02244	6,585	2
1018011	FLUID DISPLAY SOLV. SOCKET 140	5,29995	0,04836	11,265	2
1018012	FLUID DISPLAY SOLV. SOCKET 160	5,54	0,04460	11,84	2
1018014	FLUID DISPLAY SOLV. SOCKET 200	9,17	0,04836	9,9	1
1018015	FLUID DISPLAY SOLV. SOCKET 225	10,4805	0,06149	11,401	1



ITEM 088 | Fluid display, solvent socket outlet

PESO (g)	CÓDIGO	A	BRIDA	B	C	D	E	PN	MEDIDA
730	18004	40	63	172	125	28	70	PN10	MÉTRICO
786	18005	50	63	176	125	31	70	PN10	MÉTRICO
738	18006	63	63	150	125	36	70	PN10	MÉTRICO
920	18007	75	63	200	125	42	70	PN10	MÉTRICO
2600	18008	90	125	240	203	52	122	PN10	MÉTRICO
2740	18009	110	125	256	203	62	122	PN10	MÉTRICO
2800	18010	125	125	284	203	70	122	PN10	MÉTRICO
4710	18011	140	160	297	251	75	137	PN10	MÉTRICO
5034	18012	160	160	317	251	86	137	PN10	MÉTRICO
8895	18014	200	200	446	297	106	210	PN10	MÉTRICO



ITEM 088 | Fluid display, solvent socket outlet

9955

18015

225

200

=210+2*161

297

120

210

PN10

MÉTRICO



Product Documents



Product Certificates

Company Certificates

