

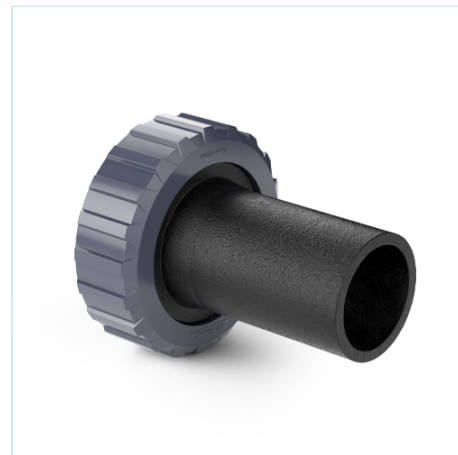


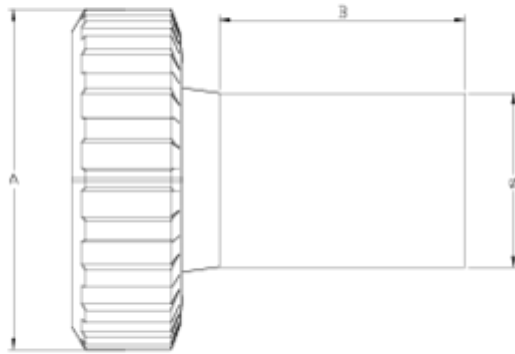
## Spare parts

# PE outlet

## ITEM 642

REFERENCE	DESCRIPTION	Net weight	Volumen (m <sup>3</sup> )	Gross weight	Unidades lote
111D841	BIDIRECTIONAL BALL V. PE OUTLET 20	0,04125	0,01553	1,5642	30
111D842	BIDIRECTIONAL BALL V. PE OUTLET 25	0,057143	0,01553	2,041	30
111D843	BIDIRECTIONAL BALL V. PE OUTLET 32	0,0767	0,02244	2,541	30
111D844	BIDIRECTIONAL BALL V. PE OUTLET 40	0,14541	0,02244	4,58	30
111D845	BIDIRECTIONAL BALL V. PE OUTLET 50	0,219233	0,03129	7,15	30
111D846	BIDIRECTIONAL BALL V. PE OUTLET 63	0,3653	0,03129	7,879	20
111D847	BIDIRECTIONAL BALL V. PE OUTLET 75	0,605075	0,01553	2,747	4
111D848	THERMO FUSION OUTLET 90	0,9	0,02243	4,0877	4





## ITEM 642 | PE outlet

CÓDIGO	r	PESO (g)	DN	A	B	PN	MEDIDA
11D841	20	67	15	55	65	PN16	MÉTRICO
11D842	25	81	20	62	65	PN16	MÉTRICO
11D843	32	134	25	72	70	PN16	MÉTRICO
11D844	40	150	32	88	70	PN16	MÉTRICO
11D845	50	230	40	103	79	PN16	MÉTRICO
11D846	63	340	50	120	89	PN16	MÉTRICO
11D847	75	580	65	150	91	PN10	MÉTRICO
11D848	90	990	80	181	100	PN10	MÉTRICO



## Product Documents



## Product Certificates

## Company Certificates

