



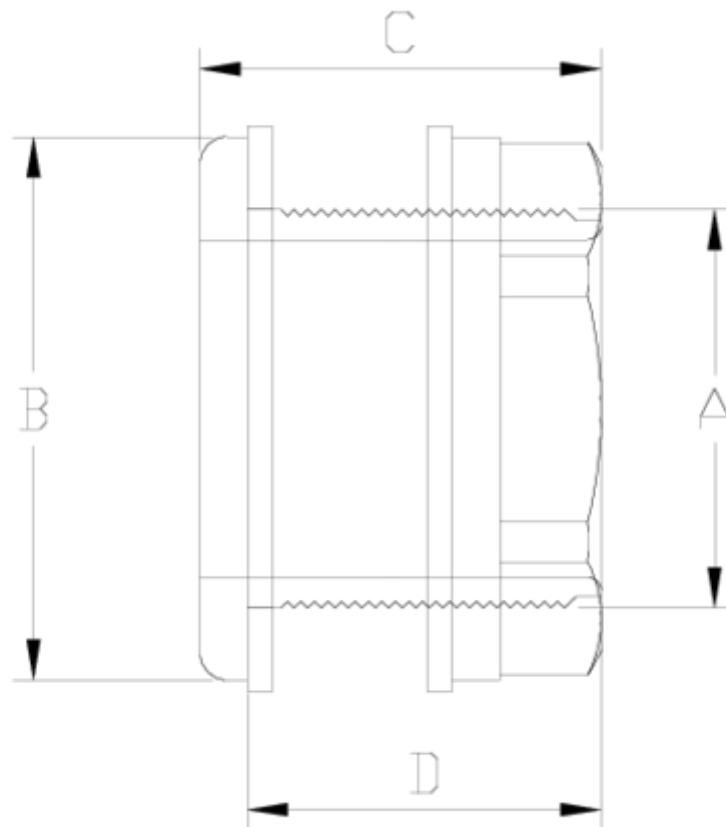
PP threaded fittings

Tank coupling

ITEM 123

| REFERENCE | DESCRIPTION | Net weight | Volumen (m ³) | Gross weight | Unidades lote |
|-----------|------------------------|------------|---------------------------|--------------|---------------|
| 1004201 | PP TANK ADAPTOR 1/2" | 0,020573 | 0,00473 | 0,94 | 40 |
| 1004202 | PP TANK ADAPTOR 3/4" | 0,072023 | 0,00473 | 2,998 | 40 |
| 1004203 | PP TANK ADAPTOR 1" | 0,03819 | 0,00891 | 1,715 | 40 |
| 1004204 | PP TANK ADAPTOR 1 1/4" | 0,08898 | 0,00892 | 1,967 | 20 |
| 1004205 | PP TANK ADAPTOR 1 1/2" | 0,08663 | 0,00892 | 1,92 | 20 |
| 1004206 | PP TANK ADAPTOR 2" | 0,135165 | 0,01553 | 3,03 | 20 |





ITEM 123 | Tank coupling

| Código | f tubo - A | Peso (g) | B | C | D | PN | TIPO ROSCA |
|--------|------------|----------|----|----|----|------|------------|
| 04201 | 1/2" | 22 | 40 | 53 | 50 | PN10 | BSP |
| 04202 | 3/4" | 34 | 45 | 57 | 54 | PN10 | BSP |
| 04203 | 1" | 48 | 50 | 64 | 60 | PN10 | BSP |
| 04204 | 1 1/4" | 66 | 54 | 68 | 64 | PN10 | BSP |
| 04205 | 1 1/2" | 91 | 64 | 75 | 70 | PN10 | BSP |
| 04206 | 2" | 125 | 78 | 79 | 74 | PN10 | BSP |



Product Documents



Product Certificates



Company Certificates

