



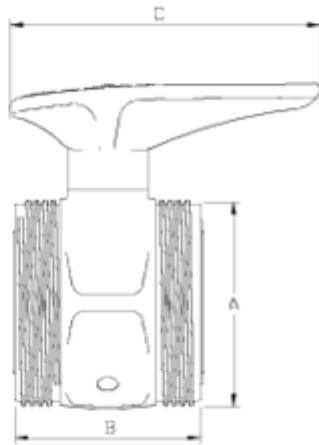
## Spare parts

# PTFE main body basic ball valve

## ITEM 239



REFERENCE	DESCRIPTION	Net weight	Volumen (m <sup>3</sup> )	Gross weight	Unidades lote
1011741	PTFE MAIN BODY, BALL VALVE 20	0,1	0,00892	3,2	30
1011742	PTFE MAIN BODY, BALL VALVE 25	0,10663	0,00892	2,32	20
1011743	PTFE MAIN BODY, BALL VALVE 32	0,465743	0,02243	14,46	30
1011744	PTFE MAIN BODY, BALL VALVE 40	0,362	0,01553	5,4	14
1011745	PTFE MAIN BODY, BALL VALVE 50	0,465887	0,01553	7,315	15
1011746	PTFE MAIN BODY, BALL VALVE 63	0,746858	0,02244	9,45	12
1011747	PTFE MAIN BODY, BALL VALVE 75	1,491	0,02244	6,504	4
1011748	PTFE MAIN BODY, BALL VALVE 90	2,249	0,03129	9,556	4
1011749	PTFE MAIN BODY, BALL VALVE 110	3,3	0,02244	7,14	2



## ITEM 239 | PTFE main body basic ball valve

CÓDIGO	f tubo	PESO (g)	DN	A	B	C	PN	MEDIDA
11731	20	83	15	42	44	73	PN16	MÉTRICO
11732	25	101	20	47	49	73	PN16	MÉTRICO
11733	32	199	25	57	66	110	PN16	MÉTRICO
11734	40	324	32	71	71	120	PN16	MÉTRICO
11735	50	422	40	83	75	120	PN16	MÉTRICO
11736	63	700	50	98	89	178	PN16	MÉTRICO
11737	75	1491	50	127	119	260	PN10	MÉTRICO
11738	90	2249	65	151	140	260	PN10	MÉTRICO
11637	110	3300	100	180	155	280	PN10	MÉTRICO



## Product Documents



## Product Certificates

## Company Certificates

