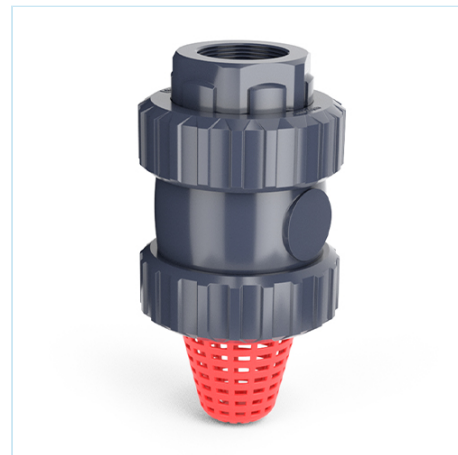


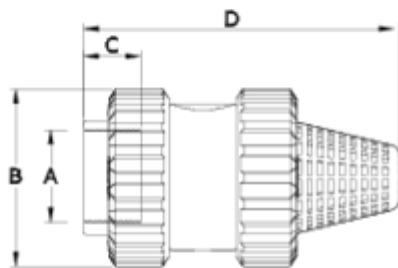


PVC check valves (with spring)

Female threaded outlet - Foot - FPM seal ITEM 275



REFERENCE	DESCRIPTION	Net weight	Volumen (m ³)	Gross weight	Unidades lote
1016611	PVC FOOT CHECK V. (W/SPRING) FEM.TH.1/2"FPM	0,128	0,01553	5,36	40
1016612	PVC FOOT CHECK V. (W/SPRING) FEM.TH.3/4"FPM	0,161	0,02244	6,98	40
1016613	PVC FOOT CHECK V. (W/SPRING) FEM.TH.1"FPM	0,271243	0,02244	8,625	30
1016614	PVC FOOT CHECK V. (W/SPRING) FEM.TH.1 1/4"FPM	0,45	0,03129	9,56	20
1016615	PVC FOOT CHECK V. (W/SPRING) FEM.TH.1 1/2"FPM	0,681858	0,02244	8,67	12
1016616	PVC FOOT CHECK V. (W/SPRING) FEM.TH.2"FPM	1,075	0,04717	13,44	12
1016617	PVC FOOT CHECK V. (W/SPRING) FEM.TH.2 1/2"FPM	2,204	0,03129	9,376	4
1016618	PVC FOOT CHECK V. (W/SPRING) FEM.TH.3"FPM	3,805	0,03129	8,17	2



ITEM 275 | Female threaded outlet - Foot - FPM seal

Código Vitón	A	Peso	B	C	D	PN	TIPO ROSCA
16611	1/2"	127	52	16	106	PN16	BSP
16612	3/4"	164	59	17	118	PN16	BSP
16613	1"	272	69	21	147	PN16	BSP
16614	1 1/4"	448	85	23	164	PN16	BSP
16615	1 1/2"	682	99	31	175	PN16	BSP
16616	2"	1075	116	38	200	PN16	BSP
16617	2 1/2"	2400	150	44	260	PN10	BSP
16618	3"	4120	178	52	303	PN10	BSP



Product Documents



Product Certificates

Company Certificates

