



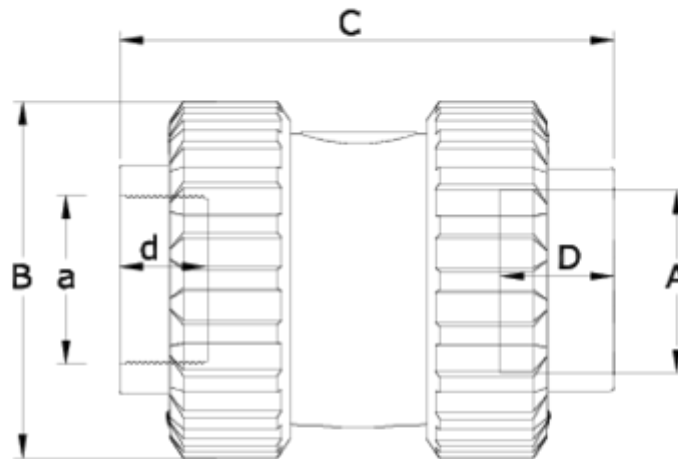
## PVC check valves (with spring)

# Plain/threaded outlet - EPDM seal

## ITEM 268



REFERENCE	DESCRIPTION	Net weight	Volumen (m <sup>3</sup> )	Gross weight	Unidades lote
1016021	PVC CHECK V. (W/SPR), PLAIN-F.THR.1/2"-20	0,134	0,01553	5,86	40
1016022	PVC CHECK V. (W/SPR), PLAIN-F.THR.3/4"-25	0,177058	0,02243	7,57	40
1016023	PVC CHECK V. (W/SPR), PLAIN-F.THR.1"-32	0,293743	0,02244	9,3	30
1016024	PVC CHECK V. (W/SPR), PLAIN-F.THR.1 1/4"-40	0,494	0,02244	10,415	20
1016025	PVC CHECK V. (W/SPR), PLAIN-F.THR.1 1/2"-50	0,7275	0,03129	9,059	12
1016026	PVC CHECK V. (W/SPR), PLAIN-F.THR.2"-63	1,179	0,03129	11,91	10
1016027	PVC CHECK V. (W/SPR), PLAIN-F.THR.2 1/2"-75	2,26	0,03129	11,156	4
1016028	PVC CHECK V. (W/SPR), PLAIN-F.THR.3"-90	3,5463	0,03129	9,076	2



## ITEM 268 | Plain/threaded outlet - EPDM seal

Código EPDM	A	a	Peso	B	C	D	d	PN	TIPO ROSCA
16021	20	1/2"	135	52	88	17	16	PN16	BSP
16022	25	3/4"	177	59	97	19	17	PN16	BSP
16023	32	1"	289	69	121	24	21	PN16	BSP
16024	40	1 1/4"	484	85	134	26	23	PN16	BSP
16025	50	1 1/2"	696	99	153	31	31	PN16	BSP
16026	63	2"	1111	116	169	38	38	PN16	BSP
16027	75	2 1/2"	2649	150	211	44	44	PN10	BSP
16028	90	3"	4258	178	246	51	52	PN10	BSP



## Product Documents



## Product Certificates

## Company Certificates

