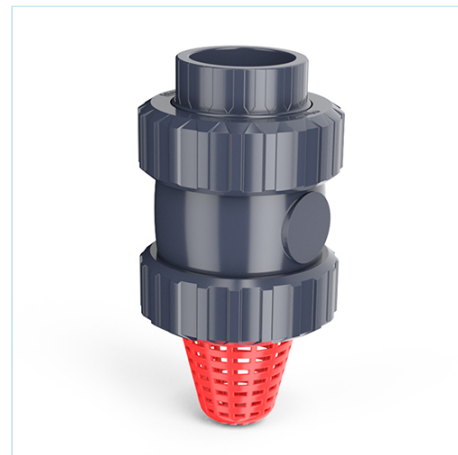




PVC check valves (with spring)

Solvent socket outlet - Foot - FPM seal

ITEM 274



| REFERENCE | DESCRIPTION | Net weight | Volumen (m ³) | Gross weight | Unidades lote |
|-----------|---|------------|---------------------------|--------------|---------------|
| 1016601 | PVC FOOT CHECK V. (W/SPRING) S. SOCK 20 FPM | 0,124 | 0,01553 | 5,2 | 40 |
| 1016602 | PVC FOOT CHECK V. (W/SPRING) S. SOCK 25 FPM | 0,16 | 0,02244 | 6,94 | 40 |
| 1016603 | PVC FOOT CHECK V. (W/SPRING) S. SOCK 32 FPM | 0,267743 | 0,02244 | 8,52 | 30 |
| 1016604 | PVC FOOT CHECK V. (W/SPRING) S. SOCK 40 FPM | 0,435 | 0,02244 | 9,24 | 20 |
| 1016605 | PVC FOOT CHECK V. (W/SPRING) S. SOCK 50 FPM | 0,65 | 0,02244 | 8,34 | 12 |
| 1016606 | PVC FOOT CHECK V. (W/SPRING) S. SOCK 63 FPM | 1,0437 | 0,04836 | 13,19 | 12 |
| 1016607 | PVC FOOT CHECK V. (W/SPRING) S. SOCK 75 FPM | 2,2 | 0,03129 | 9,36 | 4 |
| 1016608 | PVC FOOT CHECK V. (W/SPRING) S. SOCK 90 FPM | 3,31925 | 0,03129 | 7,255 | 2 |
| 1016679 | PVC FOOT CHECK V. (W/SPRING) S. SOCK 90-110 FPM | 3,5418 | 0,03129 | 7,7 | 2 |



ITEM 274 | Solvent socket outlet - Foot - FPM seal

| Código Vitón | A | Peso | B | C | D | PN | MEDIDA |
|--------------|-----|------|-----|----|-----|------|---------|
| 16601 | 20 | 123 | 52 | 17 | 104 | PN16 | MÉTRICO |
| 16602 | 25 | 160 | 59 | 19 | 116 | PN16 | MÉTRICO |
| 16603 | 32 | 266 | 69 | 24 | 145 | PN16 | MÉTRICO |
| 16604 | 40 | 435 | 85 | 26 | 163 | PN16 | MÉTRICO |
| 16605 | 50 | 650 | 99 | 31 | 173 | PN16 | MÉTRICO |
| 16606 | 63 | 1000 | 116 | 38 | 206 | PN16 | MÉTRICO |
| 16607 | 75 | 2500 | 150 | 44 | 269 | PN10 | MÉTRICO |
| 16608 | 90 | 4000 | 178 | 51 | 312 | PN10 | MÉTRICO |
| 16679 | 110 | 4235 | 178 | 61 | 325 | PN10 | MÉTRICO |



Product Documents



Product Certificates

Company Certificates

