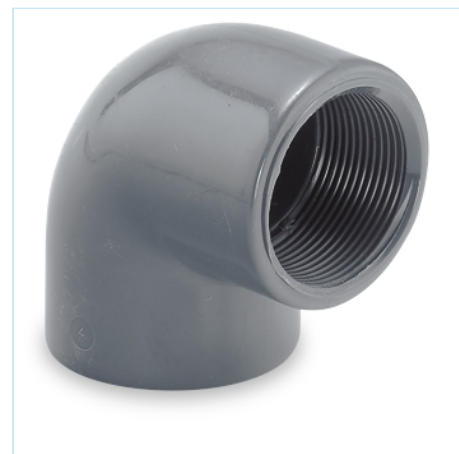




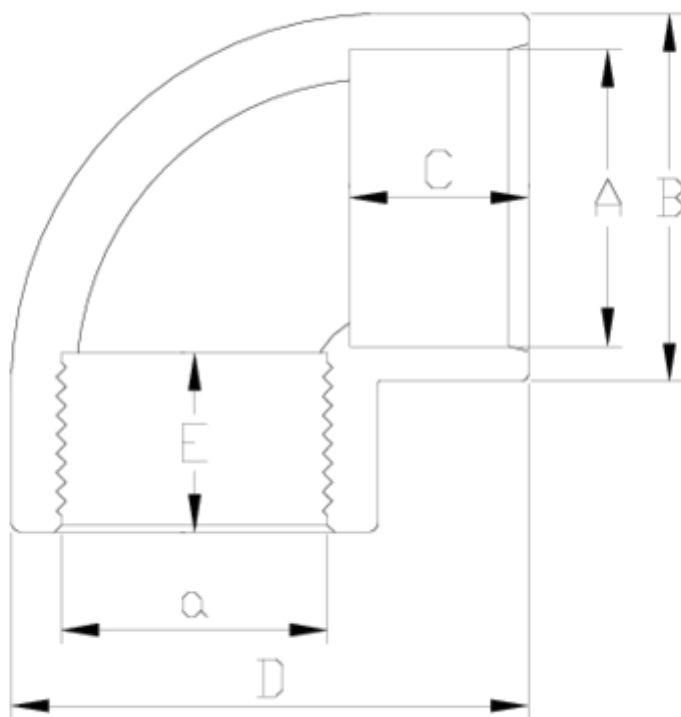
PVC-U pressure fittings

90° elbow, solvent socket outlet

ITEM 004



REFERENCE	DESCRIPTION	Net weight	Volumen (m ³)	Gross weight	Unidades lote
1002201	90° ELBOW PLAIN/F. THREAD 20-1/2"	0,021726	0,00892	2,36	100
1002202	90° ELBOW PLAIN/F. THREAD 25-3/4"	0,033126	0,00892	3,5	100
1002203	90° ELBOW PLAIN/F. THREAD 32-1"	0,064853	0,02244	6,973	100
1002204	90° ELBOW PLAIN/F. THREAD 40-1 1/4"	0,12457	0,03129	13,03	100
1002205	90° ELBOW PLAIN/F. THREAD 50-1 1/2"	0,160832	0,06649	17,0037	100
1002206	90° ELBOW PLAIN/F. THREAD 63-2"	0,286364	0,06649	15,2387	50
1002207	90° ELBOW PLAIN/F. THREAD 75-2 1/2"	0,45249	0,04880	14,15	30
1002208	90° ELBOW PLAIN/F. THREAD 90-3"	0,849439	0,04836	15,955	18
1002260	90° ELBOW PLAIN/F. THREAD 75-1 1/2"	0,59435	0,03129	12,46	20
1002261	90° ELBOW PLAIN/F. THREAD 75-2"	0,57235	0,03129	12,02	20
1002262	90° ELBOW PLAIN/F. THREAD 90-2"	1,073817	0,03680	13,435	12
1002263	90° ELBOW PLAIN/F. THREAD 90-2 1/2"	0,995	0,03680	12,56	12



ITEM 004 | 90° elbow, solvent socket outlet

Código	A-a	Peso (g)	B	C	D	E	PN	ROSCA
02201	20-1/2"	21	27	16	41	16	PN10	BSP
02202	25-3/4"	34	33	19	50	17	PN10	BSP
02203	32-1"	66	43	22	61	22	PN10	BSP
02204	40-1 1/4"	120	50	26	74	23	PN10	BSP
02205	50-1 1/2"	145	61	31	88	24	PN10	BSP
02206	63-2"	275	75	38	109	28	PN10	BSP
02260	75-1 1/2"	589	89	44	129	24	PN10	BSP
02261	75-2"	562	89	44	129	28	PN10	BSP
02207	75-2 1/2"	427	89	44	129	32	PN10	BSP
02262	90-2"	1040	108	51	156	28	PN10	BSP



ITEM 004 | 90° elbow, solvent socket outlet

02263	90-2 1/2"	995	108	51	156	32	PN10	BSP
02208	90-3"	831	108	51	156	35	PN10	BSP



Product Documents



Product Certificates



Company Certificates

