

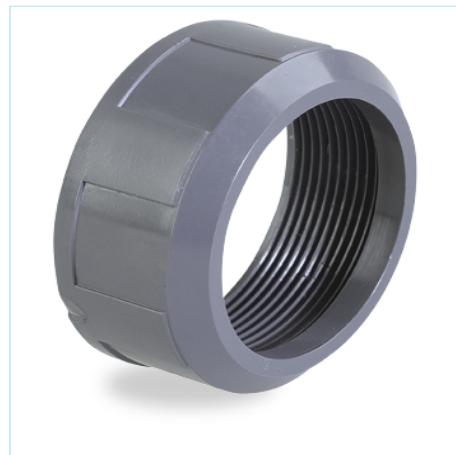


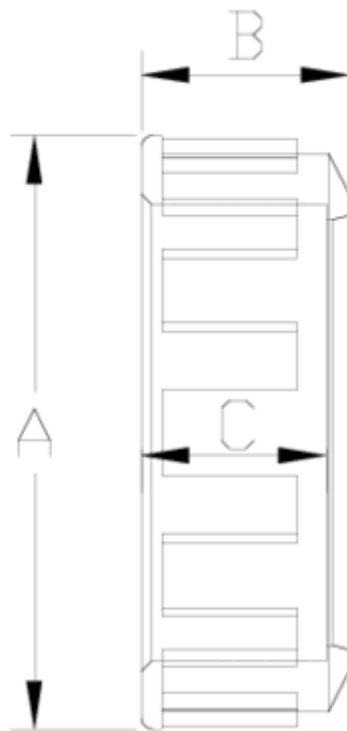
## PVC-U pressure fittings

# Female threaded union nut

## ITEM 405

REFERENCE	DESCRIPTION	Net weight	Volumen (m <sup>3</sup> )	Gross weight	Unidades lote
1001913	PVC NUT FEM. THREADED 20	0,013745	0,00473	0,4	100
1001916	PVC NUT FEM. THREADED 25	0,0224	0,00473	0,566	20
1001917	PVC NUT FEM. THREADED 32	0,0332	0,00473	0,782	20
1001918	PVC NUT FEM. THREADED 40	0,05429	0,00473	0,66	10
1001919	PVC NUT FEM. THREADED 50	0,074	0,00472	0,8571	10
1001920	PVC NUT FEM. THREADED 63	0,115	0,00472	1,2671	10
1001921	UNION NUT FEMALE THREAD 75	0,15826	0,00891	1,77	10
1001922	UNION NUT FEMALE THREAD 90	0,2818	0,01553	1,9508	6
1001923	UNION NUT FEMALE THREAD 110	0,3744	0,01553	1,7576	4





## ITEM 405 | Female threaded union nut

Código	d	Peso (g)	A	B	C
01913	20	13	41	22	16
01916	25	22	51	25	18
01917	32	39	62	27	20
01918	40	57	74	29	22
01919	50	73	80	33	26
01920	63	117	98	38	28
01921	75	255	121	43	34
01922	90	291	142	52	42
01923	110	416	166	60	48



## Product Documents



## Product Certificates



## Company Certificates

