



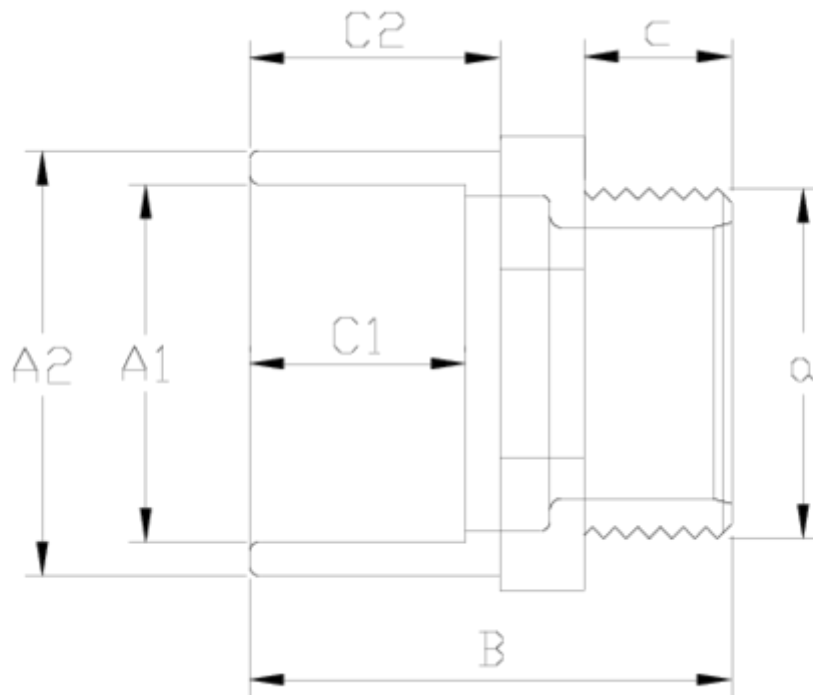
## PVC-U pressure fittings

# Plain/threaded nipple - white range

## ITEM 049



REFERENCE	DESCRIPTION	Net weight	Volumen (m <sup>3</sup> )	Gross weight	Unidades lote
1002563	NIPPLE PLAIN/M. THREAD 40-50-1" WHITE	0,075	0,01553	5,5104	70
1002564	NIPPLE PLAIN/M. THREAD 40-50-1 1/4" WHITE	0,085119	0,01553	6,285	70
1002565	NIPPLE PLAIN/M.THREAD 40-50-1 1/2" WHITE	0,083761	0,01553	6,19	70
1002566	NIPPLE PLAIN/M. THREAD 50-63-1" WHITE	0,1143	0,02244	7,2855	60
1002567	NIPPLE PLAIN/M. THR. 50-63-1 1/4" WHITE	0,115	0,02244	7,3275	60
1002568	NIPPLE PLAIN/MALE THREADED 50-63-1 1/2" WHITE	0,126288	0,02244	8,065	60
1002569	NIPPLE PLAIN/MALE THREADED 50-63-2" WHITE	0,135288	0,02244	8,605	60



## ITEM 049 | Plain/threaded nipple - white range

Código	A1-A2 x a	Peso (g)	B	C1	C2	c	PN	ROSCA
02563	40-50x1"	72	64	26	31	19	PN16	BSP
02564	40-50x1 1/4"	75	65	26	31	22	PN16	BSP
02565	40-50x1 1/2"	79	66	26	31	22	PN16	BSP
02566	50-63x1"	114	71	31	38	19	PN16	BSP
02567	50-63x1 1/4"	118	74	31	38	22	PN16	BSP
02568	50-63x1 1/2"	121	74	31	38	22	PN16	BSP
02569	50-63x2"	128	78	31	38	26	PN16	BSP



## Product Documents



## Product Certificates



## Company Certificates

