



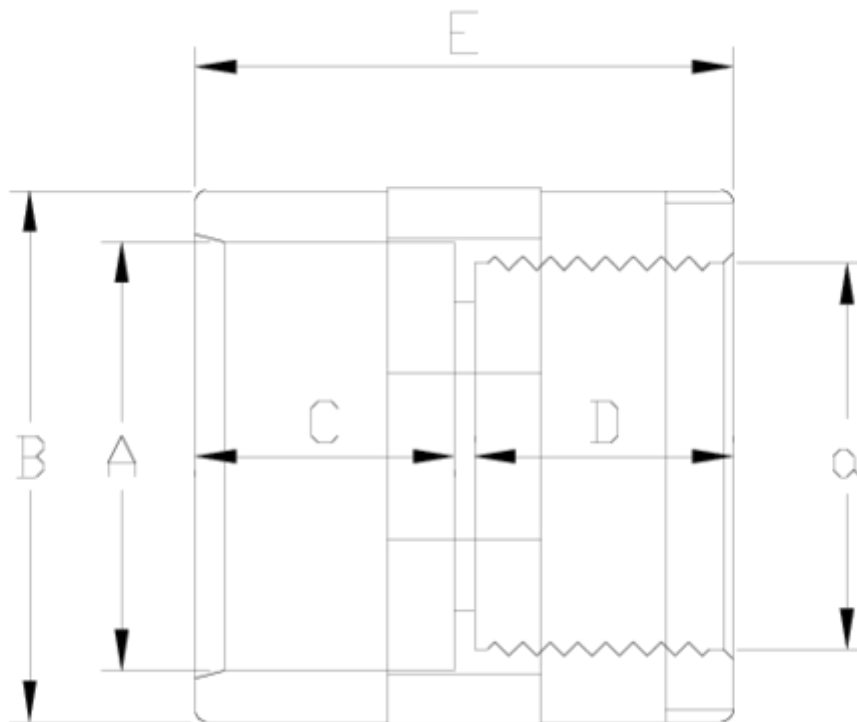
## PVC-U pressure fittings

# Reinforced plain/threaded coupling

## ITEM 437



REFERENCE	DESCRIPTION	Net weight	Volumen (m <sup>3</sup> )	Gross weight	Unidades lote
1002190	REINFORCED UNION BUSH 20-1/2"	0,019029	0,00473	2,02	100
1002191	REINFORCED UNION BUSH 25-3/4"	0,027376	0,00892	2,925	100
1002192	REINFORCED UNION BUSH 32-1"	0,048537	0,00892	3,585	70
1002193	REINFORCED UNION BUSH 40-1 1/4"	0,0766	0,02244	6,229	75
1002194	REINFORCED UNION BUSH 50-1 1/2"	0,107	0,03682	11,24	100
1002195	REINFORCED UNION BUSH 63-2"	0,178576	0,04717	14,035	75
1002196	REINFORCED UNION BUSH 75-2 1/2"	0,2426	0,04717	12,288	48
1002197	REINFORCED UNION BUSH 90-3"	0,441033	0,03682	11,134	24



## ITEM 437 | Reinforced plain/threaded coupling

Código	A-a	Peso (g)	B	C	D	E	PN	ROSCA
02190	20-1/2"	27	28	17	16	36	PN10	BSP
02191	25-3/4"	35	34	20	17	41	PN10	BSP
02192	32-1"	53	42	22	21	48	PN10	BSP
02193	40-1 1/4"	81	51	27	23	53	PN10	BSP
02194	50-1 1/2"	118	61	32	24	61	PN10	BSP
02195	63-2"	178	75	39	28	72	PN10	BSP
02196	75-2 1/2"	305	90	44	32	85	PN10	BSP
02197	90-3"	518	110	51	35	100	PN10	BSP
02198	110-4"	698	129	61	39	108	PN10	BSP



## Product Documents



## Product Certificates



## Company Certificates

