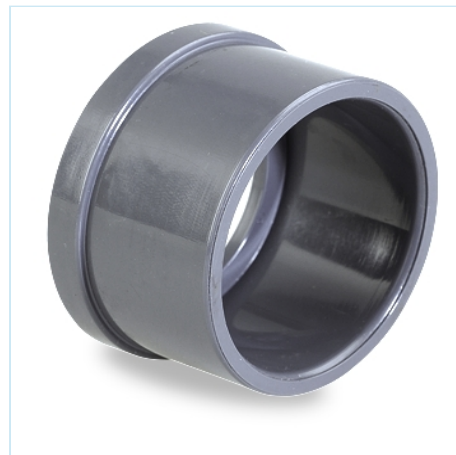


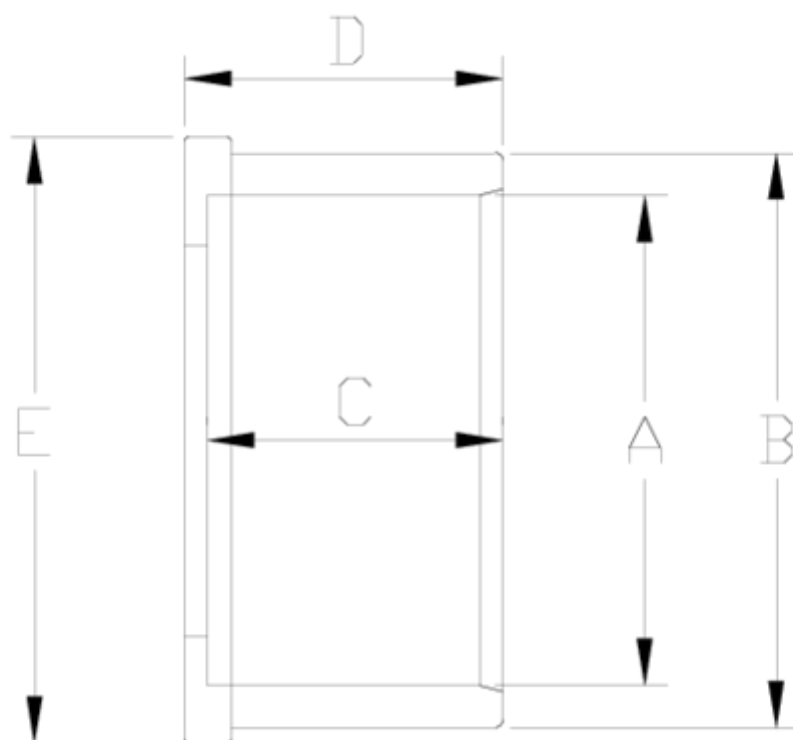


PVC-U pressure fittings

Union coupling solvent socket outlet ANSI ITEM 953



| REFERENCE | DESCRIPTION | Net weight | Volumen (m ³) | Gross weight | Unidades lote |
|-----------|--|------------|---------------------------|--------------|---------------|
| 1001978 | ANSI' UNION COUPLING SOLV. SOCK. OUT. 1" | 0,025 | 0,00472 | 0,6171 | 20 |
| 1001980 | ANSI' UNION COUPLING SOLV. SOCK. OUT. 1 1/2" | 0,043 | 0,00472 | 0,5471 | 10 |
| 1001981 | ANSI' UNION COUPLING SOLV. SOCK. OUT. 2" | 0,074 | 0,00472 | 0,8571 | 10 |
| 1001982 | ANSI' UNION COUPLING SOLV. SOCK. OUT. 2 1/2" | 0,166 | 0,00472 | 1,7771 | 10 |



ITEM 953 | Union coupling solvent socket outlet ANSI

| Codigo | A | Peso (g) | B | C | D | E | PN | MEDIDA |
|--------|--------|----------|----|----|----|----|------|---------|
| 01976 | 1/2" | 8 | 27 | 16 | 19 | 30 | PN16 | MÉTRICO |
| 01977 | 3/4" | 20 | 35 | 19 | 22 | 39 | PN16 | MÉTRICO |
| 01978 | 1" | 25 | 41 | 22 | 26 | 45 | PN16 | MÉTRICO |
| 01979 | 1 1/4" | 36 | 50 | 26 | 35 | 63 | PN16 | MÉTRICO |
| 01980 | 1 1/2" | 43 | 63 | 31 | 44 | 63 | PN16 | MÉTRICO |
| 01981 | 2" | 74 | 76 | 38 | 41 | 78 | PN16 | MÉTRICO |
| 01982 | 2 1/2" | 166 | 87 | 44 | 48 | 85 | PN16 | MÉTRICO |



Product Documents



Product Certificates



Company Certificates

