



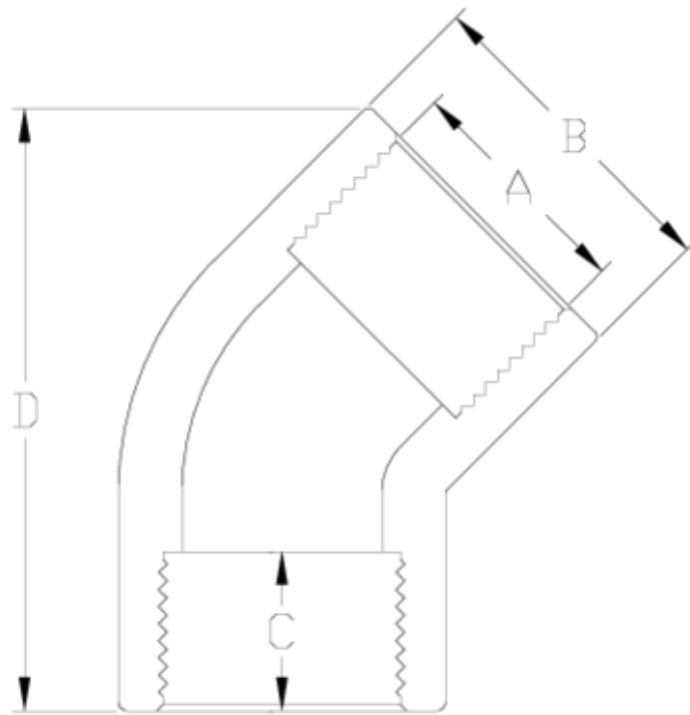
## Accesorios de presión PVC-U

# Codo 45° Rosca H/H

## ITEM 008

| REFERENCIA | DESCRIPCIÓN                       | Peso neto | Volumen (m <sup>3</sup> ) | Peso bruto | Unidades lote |
|------------|-----------------------------------|-----------|---------------------------|------------|---------------|
| 1002311    | CODO 45° ROSCA H-H 1/2"-1/2"      | 0,017779  | 0,00473                   | 1,895      | 100           |
| 1002312    | CODO 45° ROSCA H-H 3/4"-3/4"      | 0,028056  | 0,00892                   | 2,993      | 100           |
| 1002313    | CODO 45° ROSCA H-H 1"-1"          | 0,053783  | 0,01553                   | 5,705      | 100           |
| 1002314    | CODO 45° ROSCA H-H 1 1/4"-1 1/4"  | 0,094518  | 0,03129                   | 10,97      | 110           |
| 1002315    | CODO 45° ROSCA H-H 1 1/2"- 1 1/2" | 0,145438  | 0,04717                   | 16,64      | 110           |
| 1002316    | CODO 45° ROSCA H-H 2"-2"          | 0,274785  | 0,04717                   | 15,755     | 55            |
| 1002317    | CODO 45° ROSCA H-H 2 1/2"-2 1/2"  | 0,391897  | 0,04117                   | 13,66      | 33            |
| 1002318    | CODO 45° ROSCA H-H 3"-3"          | 0,677881  | 0,04117                   | 11,535     | 16            |





## ITEM 008 | Codo 45° Rosca H/H

| Código | A      | Peso (g) | B   | C  | D   | PN   | ROSCA |
|--------|--------|----------|-----|----|-----|------|-------|
| 02311  | 1/2"   | 20       | 27  | 16 | 48  | PN10 | BSP   |
| 02312  | 3/4"   | 27       | 33  | 17 | 53  | PN10 | BSP   |
| 02313  | 1"     | 54       | 41  | 21 | 63  | PN10 | BSP   |
| 02314  | 1 1/4" | 80       | 50  | 23 | 80  | PN10 | BSP   |
| 02315  | 1 1/2" | 156      | 61  | 24 | 95  | PN10 | BSP   |
| 02316  | 2"     | 260      | 76  | 28 | 125 | PN10 | BSP   |
| 02317  | 2 1/2" | 361      | 89  | 32 | 137 | PN10 | BSP   |
| 02318  | 3"     | 676      | 107 | 35 | 162 | PN10 | BSP   |



## Documentación de Producto



## Certificados de Producto



## Certificados de Empresa

