



Collarines Bisagra PPFV

Collarín bisagra salida RH

ITEM 137

| REFERENCIA | DESCRIPCIÓN | Peso neto | Volumen (m ³) | Peso bruto | Unidades lote |
|------------|---|-----------|---------------------------|------------|---------------|
| 1005014 | COLLARIN BISAGRA ROSCAR REF. 225-1 1/2" | 3,6592 | 0,04836 | 8,007 | 2 |
| 1005015 | COLLARIN BISAGRA ROSCAR REF. 225-2" | 3,009 | 0,04836 | 8,2 | 2 |
| 1005016 | COLLARIN BISAGRA ROSCAR REF. 225-2 1/2" | 3,6332 | 0,04836 | 7,955 | 2 |
| 1005017 | COLLARIN BISAGRA ROSCAR REF. 225-3" | 3,6707 | 0,04836 | 8,03 | 2 |
| 1005018 | COLLARIN BISAGRA ROSCAR REF. 225-4" | 3,82565 | 0,04836 | 8,34 | 2 |
| 1005019 | COLLARIN BISAGRA ROSCAR REF. 250-1 1/2" | 4,0512 | 0,04836 | 8,791 | 2 |
| 1005025 | COLLARIN BISAGRA ROSCAR REF. 315-2" | 6,4079 | 0,04880 | 6,995 | 1 |
| 1005026 | COLLARIN BISAGRA ROSCAR REF. 315-2 1/2" | 6,4829 | 0,04880 | 7,07 | 1 |
| 1005027 | COLLARIN BISAGRA ROSCAR REF. 315-3" | 6,5629 | 0,04880 | 7,15 | 1 |
| 1005028 | COLLARIN BISAGRA ROSCAR REF. 315-4" | 6,7729 | 0,04880 | 7,36 | 1 |
| 1005063 | COLLARIN BISAGRA ROSCAR REF. 250-1/2" | 4,08545 | 0,04836 | 8,836 | 2 |
| 1005064 | COLLARIN BISAGRA ROSCAR 250-3/4" | 4,0632 | 0,04836 | 8,815 | 2 |
| 1005065 | COLLARIN BISAGRA ROSCAR 250-1" | 1,34 | 0,04836 | 8,775 | 2 |
| 1005066 | COLLARIN BISAGRA ROSCAR 250-1 1/4" | 4,06615 | 0,04836 | 8,821 | 2 |
| 1005068 | COLLARIN BISAGRA ROSCAR REF. 250-2" | 4,1282 | 0,04836 | 8,945 | 2 |
| 1005069 | COLLARIN BISAGRA ROSCAR REF. 250-2 1/2" | 4,05795 | 0,04836 | 8,781 | 2 |
| 1005070 | COLLARIN BISAGRA ROSCAR REF. 250-3" | 4,08565 | 0,04836 | 8,86 | 2 |
| 1005071 | COLLARIN BISAGRA ROSCAR REF. 250-4" | 4,2007 | 0,04836 | 9,09 | 2 |
| 1005072 | COLLARIN BISAGRA ROSCAR REF. 315-1 1/2" | 6,4719 | 0,04880 | 7,059 | 1 |
| 1005200 | COLLARIN BISAGRA ROSCAR 225-1/2" | 3,68445 | 0,04836 | 8,034 | 2 |
| 1005201 | COLLARIN BISAGRA ROSCAR 225-3/4" | 3,509 | 0,04836 | 7,858 | 2 |
| 1005202 | COLLARIN BISAGRA ROSCAR 225-1" | 3,67145 | 0,04836 | 8,008 | 2 |
| 1005203 | COLLARIN BISAGRA ROSCAR 225-1 1/4" | 3,59565 | 0,04836 | 7,88 | 2 |





Collarines Bisagra PPFV





| REFERENCIA | DESCRIPCIÓN | Peso neto | Volumen (m ³) | contenido.Peso bruto | Unidades lote |
|------------|---|-----------|---------------------------|----------------------|---------------|
| 1005210 | COLLARIN BISAGRA ROSCAR 315-1/2" | 6,5079 | 0,04880 | 7,095 | 1 |
| 1005211 | COLLARIN BISAGRA ROSCAR 315-3/4" | 6,5079 | 0,04880 | 7,095 | 1 |
| 1005212 | COLLARIN BISAGRA ROSCAR 315-1" | 6,4779 | 0,04880 | 7,065 | 1 |
| 1005213 | COLLARIN BISAGRA ROSCAR 315-1 1/4" | 6,4329 | 0,04880 | 7,02 | 1 |
| 1005360 | COLLARIN BISAGRA ROSCAR 160-1/2" | 3,26575 | 0,04460 | 7,285 | 2 |
| 1005361 | COLLARIN BISAGRA ROSCAR 160-3/4" | 3,34075 | 0,04460 | 7,435 | 2 |
| 1005362 | COLLARIN BISAGRA ROSCAR 160-1" | 3,20825 | 0,03648 | 7,01 | 2 |
| 1005363 | COLLARIN BISAGRA ROSCAR 160-1 1/4" | 3,129 | 0,04460 | 7,088 | 2 |
| 1005364 | COLLARIN BISAGRA ROSCAR REF. 160-1 1/2" | 3,23075 | 0,04460 | 7,215 | 2 |
| 1005365 | COLLARIN BISAGRA ROSCAR REF. 160-2" | 3,2687 | 0,03648 | 7,155 | 2 |
| 1005366 | COLLARIN BISAGRA ROSCAR REF. 160-2 1/2" | 3,208 | 0,04460 | 7,246 | 2 |
| 1005367 | COLLARIN BISAGRA ROSCAR REF. 160-3" | 3,19575 | 0,03648 | 7,145 | 2 |
| 1005368 | COLLARIN BISAGRA ROSCAR REF. 160-4" | 3,443 | 0,04460 | 7,58 | 2 |
| 1005451 | COLLARIN BISAGRA ROSCAR 200-1/2" | 3,385 | 0,04460 | 7,5 | 2 |
| 1005452 | COLLARIN BISAGRA ROSCAR 200-3/4" | 3,3318 | 0,04460 | 7,417 | 2 |
| 1005453 | COLLARIN BISAGRA ROSCAR 200-1" | 3,35575 | 0,04460 | 7,465 | 2 |
| 1005454 | COLLARIN BISAGRA ROSCAR 200-1 1/4" | 3,16575 | 0,04460 | 7,085 | 2 |
| 1005455 | COLLARIN BISAGRA ROSCAR REF. 200-1 1/2" | 3,353 | 0,04460 | 7,4 | 2 |
| 1005456 | COLLARIN BISAGRA ROSCAR REF. 200-2" | 3,32325 | 0,04460 | 7,4 | 2 |
| 1005457 | COLLARIN BISAGRA ROSCAR REF. 200-2 1/2" | 3,2358 | 0,04460 | 7,225 | 2 |
| 1005458 | COLLARIN BISAGRA ROSCAR REF. 200-3" | 3,38325 | 0,04460 | 7,52 | 2 |
| 1005459 | COLLARIN BISAGRA ROSCAR REF. 200-4" | 3,5375 | 0,04460 | 7,769 | 2 |
| 1005481 | COLLARIN BISAGRA ROSCAR 400-1/2" | 6,71 | 0,06347 | 7,54 | 1 |



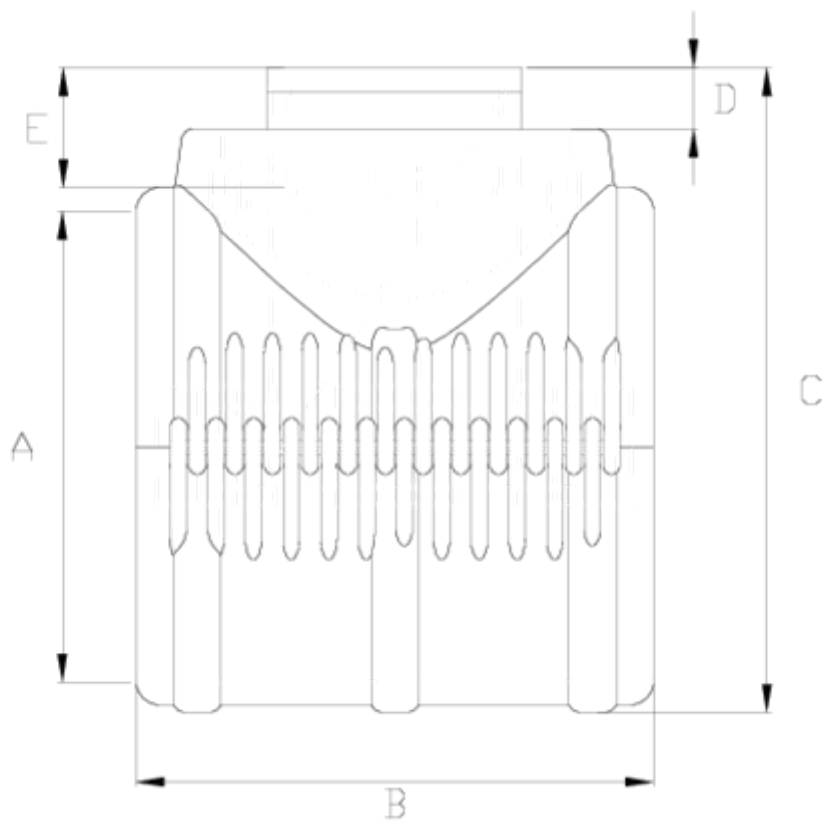
Collarines Bisagra PPFV

Collarín bisagra salida RH

ITEM 137

| REFERENCIA | DESCRIPCIÓN | Peso neto | Volumen (m ³) | contenido.Peso bruto | Unidades lote |
|------------|---|-----------|---------------------------|----------------------|---------------|
| 1005482 | COLLARIN BISAGRA ROSCAR 400-3/4" | 6,853 | 0,06347 | 7,753 | 1 |
| 1005483 | COLLARIN BISAGRA ROSCAR 400-1" | 6,73 | 0,06347 | 7,56 | 1 |
| 1005484 | COLLARIN BISAGRA ROSCAR 400-1 1/4" | 6,66 | 0,06347 | 7,49 | 1 |
| 1005485 | COLLARIN BISAGRA ROSCAR REF. 400-1 1/2" | 6,794 | 0,06347 | 7,694 | 1 |
| 1005486 | COLLARIN BISAGRA ROSCAR REF. 400-2" | 6,9563 | 0,06347 | 7,755 | 1 |
| 1005487 | COLLARIN BISAGRA ROSCAR REF. 400-2 1/2" | 6,7963 | 0,06347 | 7,595 | 1 |
| 1005488 | COLLARIN BISAGRA ROSCAR REF. 400-3" | 6,9213 | 0,06347 | 7,72 | 1 |
| 1005489 | COLLARIN BISAGRA ROSCAR REF. 400-4" | 6,82 | 0,04879 | 7,61 | 1 |





ITEM 137 | Collarín bisagra salida RH

| CÓDIGO | f tubo | f salida | PESOS | A | B | C | D | E | PN | TIPO ROSCA |
|--------|--------|----------|-------|-----|-----|-----|----|----|-----|------------|
| 05360 | 160 | 1/2" | 3188 | 160 | 225 | 225 | 9 | 16 | PN6 | BSP |
| 05361 | 160 | 3/4" | 3168 | 160 | 225 | 225 | 9 | 19 | PN6 | BSP |
| 05362 | 160 | 1" | 3148 | 160 | 225 | 225 | 9 | 22 | PN6 | BSP |
| 05363 | 160 | 1 1/4" | 3129 | 160 | 225 | 225 | 9 | 26 | PN6 | BSP |
| 05364 | 160 | 1 1/2" | 3109 | 160 | 225 | 225 | 9 | 31 | PN6 | BSP |
| 05365 | 160 | 2" | 3172 | 160 | 225 | 232 | 16 | 38 | PN6 | BSP |
| 05366 | 160 | 2 1/2" | 3208 | 160 | 225 | 238 | 22 | 44 | PN6 | BSP |
| 05367 | 160 | 3" | 3203 | 160 | 225 | 245 | 29 | 51 | PN6 | BSP |
| 05368 | 160 | 4" | 3310 | 160 | 225 | 280 | 64 | 61 | PN6 | BSP |
| 05451 | 200 | 1/2" | 3246 | 200 | 227 | 259 | 9 | 16 | PN6 | BSP |



ITEM 137 | Collarín bisagra salida RH

| | | | | | | | | | | |
|-------|-----|--------|------|-----|-----|-----|----|----|-----|-----|
| 05452 | 200 | 3/4" | 3226 | 200 | 227 | 259 | 9 | 19 | PN6 | BSP |
| 05453 | 200 | 1" | 3206 | 200 | 227 | 259 | 9 | 22 | PN6 | BSP |
| 05454 | 200 | 1 1/4" | 3187 | 200 | 227 | 259 | 9 | 26 | PN6 | BSP |
| 05455 | 200 | 1 1/2" | 3167 | 200 | 227 | 259 | 9 | 31 | PN6 | BSP |
| 05456 | 200 | 2" | 3230 | 200 | 227 | 266 | 16 | 38 | PN6 | BSP |
| 05457 | 200 | 2 1/2" | 3266 | 200 | 227 | 272 | 22 | 44 | PN6 | BSP |
| 05458 | 200 | 3" | 3261 | 200 | 227 | 279 | 29 | 51 | PN6 | BSP |
| 05459 | 200 | 4" | 3368 | 200 | 227 | 314 | 64 | 61 | PN6 | BSP |
| 05200 | 225 | 1/2" | 3529 | 225 | 225 | 283 | 9 | 16 | PN6 | BSP |
| 05201 | 225 | 3/4" | 3509 | 225 | 225 | 283 | 9 | 19 | PN6 | BSP |
| 05202 | 225 | 1" | 3489 | 225 | 225 | 283 | 9 | 22 | PN6 | BSP |
| 05203 | 225 | 1 1/4" | 3470 | 225 | 225 | 283 | 9 | 26 | PN6 | BSP |
| 05014 | 225 | 1 1/2" | 3450 | 225 | 225 | 283 | 9 | 31 | PN6 | BSP |
| 05015 | 225 | 2" | 3513 | 225 | 225 | 290 | 16 | 38 | PN6 | BSP |
| 05016 | 225 | 2 1/2" | 3549 | 225 | 225 | 296 | 22 | 44 | PN6 | BSP |
| 05017 | 225 | 3" | 3544 | 225 | 225 | 303 | 29 | 51 | PN6 | BSP |
| 05018 | 225 | 4" | 3651 | 225 | 225 | 338 | 64 | 61 | PN6 | BSP |
| 05063 | 250 | 1/2" | 3900 | 250 | 239 | 308 | 9 | 16 | PN6 | BSP |
| 05064 | 250 | 3/4" | 3880 | 250 | 239 | 308 | 9 | 19 | PN6 | BSP |
| 05065 | 250 | 1" | 3860 | 250 | 239 | 308 | 9 | 22 | PN6 | BSP |
| 05066 | 250 | 1 1/4" | 3841 | 250 | 239 | 308 | 9 | 26 | PN6 | BSP |
| 05019 | 250 | 1 1/2" | 3821 | 250 | 239 | 308 | 9 | 31 | PN6 | BSP |
| 05068 | 250 | 2" | 3884 | 250 | 239 | 315 | 16 | 38 | PN6 | BSP |
| 05069 | 250 | 2 1/2" | 3920 | 250 | 239 | 321 | 22 | 44 | PN6 | BSP |
| 05070 | 250 | 3" | 3915 | 250 | 239 | 328 | 29 | 51 | PN6 | BSP |
| 05071 | 250 | 4" | 4022 | 250 | 239 | 363 | 64 | 61 | PN6 | BSP |

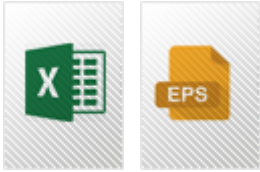


ITEM 137 | Collarín bisagra salida RH

| | | | | | | | | | | |
|-------|-----|--------|------|-----|-----|-----|----|----|------------|-----|
| 05210 | 315 | 1/2" | 5152 | 315 | 250 | 370 | 9 | 16 | PN6 | BSP |
| 05211 | 315 | 3/4" | 5132 | 315 | 250 | 370 | 9 | 19 | PN6 | BSP |
| 05212 | 315 | 1" | 5112 | 315 | 250 | 370 | 9 | 22 | PN6 | BSP |
| 05213 | 315 | 1 1/4" | 5093 | 315 | 250 | 370 | 9 | 26 | PN6 | BSP |
| 05072 | 315 | 1 1/2" | 5073 | 315 | 250 | 370 | 9 | 31 | PN6 | BSP |
| 05025 | 315 | 2" | 5136 | 315 | 250 | 377 | 16 | 38 | PN6 | BSP |
| 05026 | 315 | 2 1/2" | 5172 | 315 | 250 | 383 | 22 | 44 | PN6 | BSP |
| 05027 | 315 | 3" | 5167 | 315 | 250 | 390 | 29 | 51 | PN6 | BSP |
| 05028 | 315 | 4" | 5274 | 315 | 250 | 425 | 64 | 61 | PN6 | BSP |
| 05481 | 400 | 1/2" | 6873 | 400 | 282 | 474 | 9 | 16 | PN6 | BSP |
| 05482 | 400 | 3/4" | 6853 | 400 | 282 | 474 | 9 | 19 | PN6 | BSP |
| 05483 | 400 | 1" | 6833 | 400 | 282 | 474 | 9 | 22 | PN6 | BSP |
| 05484 | 400 | 1 1/4" | 6814 | 400 | 282 | 474 | 9 | 26 | PN6 | BSP |
| 05485 | 400 | 1 1/2" | 6794 | 400 | 282 | 474 | 9 | 31 | PN6 | BSP |
| 05486 | 400 | 2" | 6857 | 400 | 282 | 481 | 16 | 38 | PN6 | BSP |
| 05487 | 400 | 2 1/2" | 6893 | 400 | 282 | 487 | 22 | 44 | PN6 | BSP |
| 05488 | 400 | 3" | 6888 | 400 | 282 | 494 | 29 | 51 | PN6 | BSP |
| 05489 | 400 | 4" | 6995 | 400 | 282 | 529 | 64 | 61 | PN6 | BSP |



Documentación de Producto



Certificados de Producto

Certificados de Empresa

