

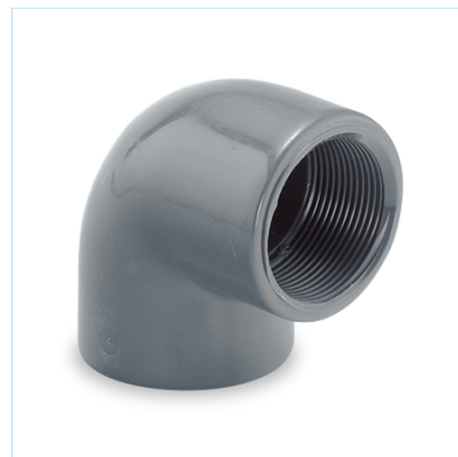


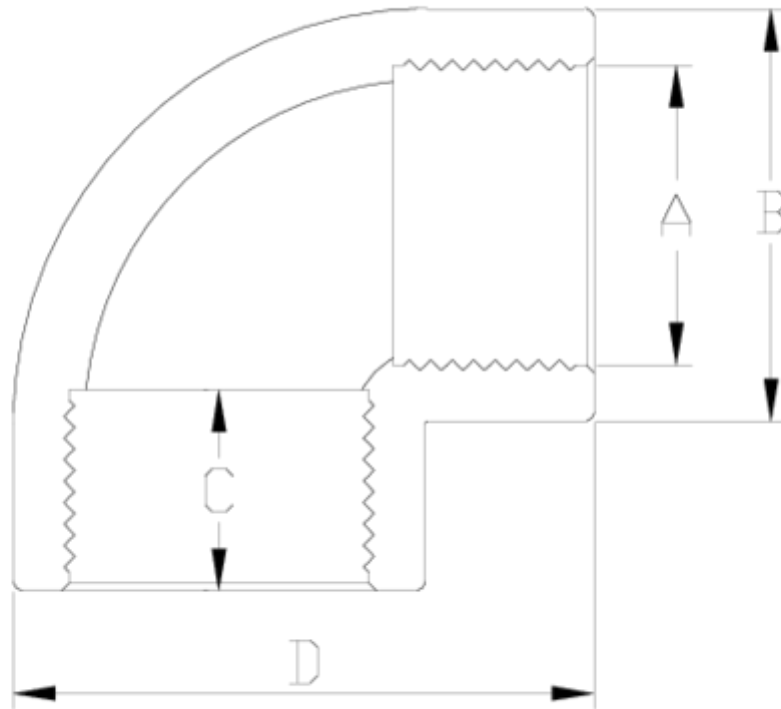
Raccords PVC-U pression

Coude 90° taraudé/taraudé

ITEM 005

| RÉFÉRENCE | DESCRIPTION | Poids net | Volume (m ³) | Poids brut | Unités par lot |
|-----------|----------------------------------|-----------|--------------------------|------------|----------------|
| 1002301 | CODO 90° ROSCA H-H 1/2"-1/2" | 0,022666 | 0,00473 | 2,454 | 100 |
| 1002302 | CODO 90° ROSCA H-H 3/4"-3/4" | 0,034576 | 0,00892 | 3,645 | 100 |
| 1002303 | CODO 90° ROSCA H-H 1"-1" | 0,066173 | 0,02244 | 7,105 | 100 |
| 1002304 | CODO 90° ROSCA H-H 1 1/4"-1 1/4" | 0,11547 | 0,03129 | 12,12 | 100 |
| 1002305 | CODO 90° ROSCA H-H 1 1/2"-1 1/2" | 0,179582 | 0,06649 | 18,7787 | 100 |
| 1002306 | CODO 90° ROSCA H-H 2"-2" | 0,327164 | 0,06649 | 17,2787 | 50 |
| 1002307 | CODO 90° ROSCA H-H 2 1/2"-2 1/2" | 0,456257 | 0,04880 | 14,35 | 30 |
| 1002308 | CODO 90° ROSCA H-H 3"-3" | 0,889161 | 0,04836 | 16,67 | 18 |





ITEM 005 | Coude 90° taraudé/taraudé

| Código | A | Peso (g) | B | C | D | PN | ROSCA |
|--------|--------|----------|-----|----|-----|------|-------|
| 02301 | 1/2" | 22 | 27 | 16 | 41 | PN10 | BSP |
| 02302 | 3/4" | 34 | 33 | 17 | 50 | PN10 | BSP |
| 02303 | 1" | 66 | 41 | 21 | 61 | PN10 | BSP |
| 02304 | 1 1/4" | 97 | 50 | 23 | 74 | PN10 | BSP |
| 02305 | 1 1/2" | 165 | 61 | 24 | 88 | PN10 | BSP |
| 02306 | 2" | 322 | 76 | 28 | 109 | PN10 | BSP |
| 02307 | 2 1/2" | 441 | 89 | 32 | 128 | PN10 | BSP |
| 02308 | 3" | 864 | 107 | 35 | 155 | PN10 | BSP |





Documentation Produit



Certifications de produits



Certificats d'entreprise



Pol. Ind. Plá Vallonga,
c/ Agua, 28
03006 ALICANTE (España)



+34 965 11 42 82



+34 965 11 48 62



tecnicocomercial@hidroten.es



Service d'Attention
Technique Commerciale
+34 966 105 888



www.hidroten.es