



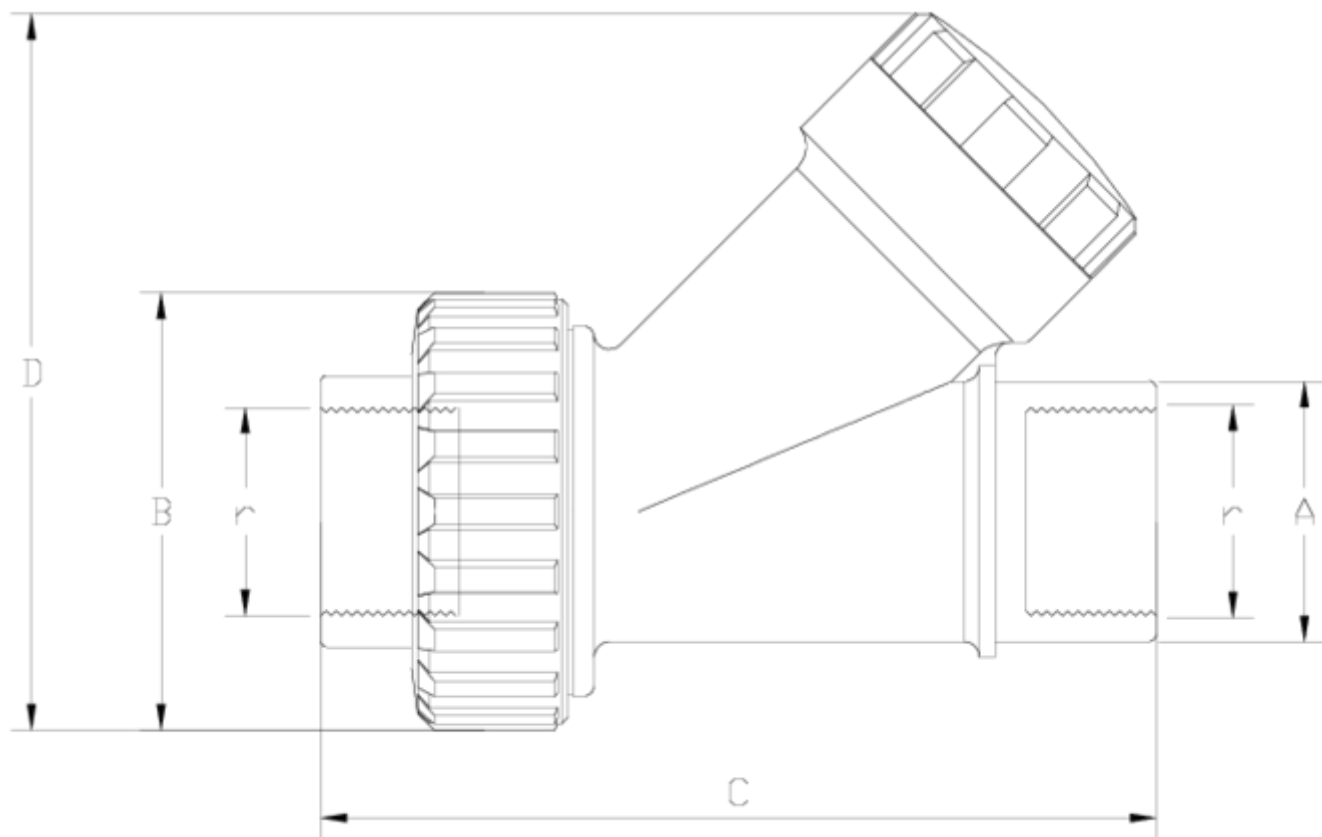
Vannes anti-retour "Ball"

VÁLVULA ANTIRRETORNO DE BOLA 'BALL' PVC S/ROSCA HEMBRA ITEM 636



| RÉFÉRENCE | DESCRIPTION | Poids net | Volume (m ³) | Poids brut | Unités par lot |
|-----------|--|-----------|--------------------------|------------|----------------|
| 1022013 | V.ANTIRRETORNO DE BOLA "BALL" PVC S/R/H 1" | 0,361365 | 0,02244 | 7,715 | 20 |
| 1022014 | V.ANTIRRETORNO DE BOLA "BALL" PVC S/R/H 1 1/4" | 0,5935 | 0,03129 | 9,4755 | 15 |
| 1022015 | V.ANTIRRETORNO DE BOLA "BALL" PVC S/R/H 1 1/2" | 0,947453 | 0,04717 | 14,8536 | 15 |
| 1022016 | V.ANTIRRETORNO DE BOLA "BALL" PVC S/R/H 2" | 1,556575 | 0,02244 | 6,714 | 4 |
| 1022017 | V.ANTIRRETORNO DE BOLA "BALL" PVC S/R/H 2 1/2" | 2,35295 | 0,03129 | 10,04 | 4 |
| 1022018 | V.ANTIRRETORNO DE BOLA "BALL" PVC S/R/H 3" | 3,9222 | 0,03129 | 8,445 | 2 |





ITEM 636 | VÁLVULA ANTIRRETORNO DE BOLA 'BALL' PVC S/ROSCA HEMBRA

| CÓDIGO | r-A | Peso (g) | DN | A | B | C | D | PN | TIPO ROSCA |
|--------|--------|----------|----|-----|-----|-----|-----|------|------------|
| 22013 | 1" | 348 | 25 | 40 | 72 | 140 | 127 | PN10 | BSP |
| 22014 | 1 1/4" | 535 | 32 | 50 | 88 | 161 | 145 | PN10 | BSP |
| 22015 | 1 1/2" | 872 | 40 | 63 | 103 | 183 | 170 | PN10 | BSP |
| 22016 | 2" | 1510 | 50 | 75 | 120 | 220 | 220 | PN10 | BSP |
| 22017 | 2 1/2" | 2450 | 65 | 90 | 150 | 255 | 255 | PN10 | BSP |
| 22018 | 3" | 3935 | 80 | 110 | 181 | 315 | 280 | PN10 | BSP |





Documentation Produit



Certifications de produits



Certificats d'entreprise

