

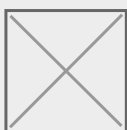
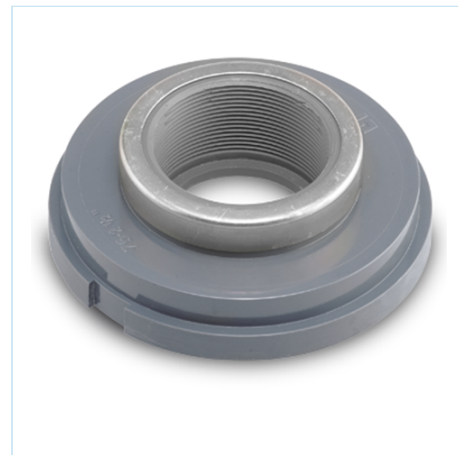


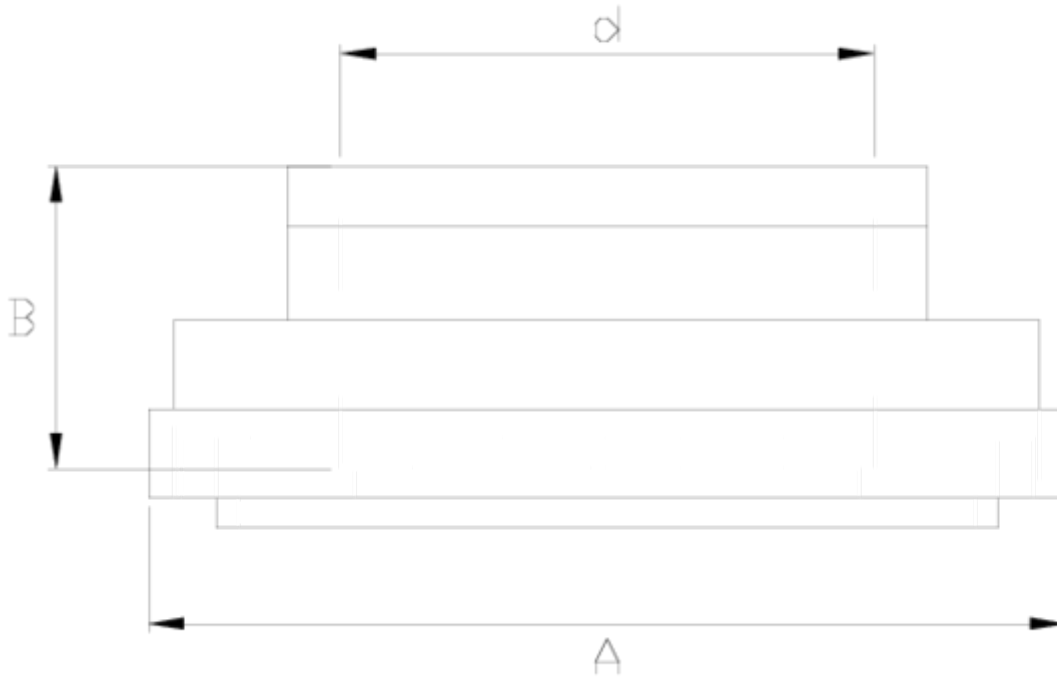
Colar de dobradiça PPFV

Boca saída r/f

ITEM 145

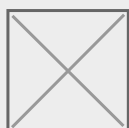
REFERÊNCIA	DESCRIÇÃO	Peso líquido	Volume (m ³)	Peso bruto	Unidades por lote
1005600	BOCA comum 160-400 S/ROSCAR REF. 1/2"	0,565275	0,01553	7,11	12
1005601	BOCA comum 160-400 S/ROSCAR REF. 3/4"	0,526	0,01553	7,045	12
1005602	BOCA comum 160-400 S/ROSCAR REF. 1"	0,553608	0,01553	6,97	12
1005603	BOCA comum 160-400 S/ROSCAR REF. 1 1/4"	0,487	0,03129	6,404	12
1005604	BOCA comum 160-400 S/ROSCAR REF. 1 1/2"	0,505692	0,01553	6,395	12
1005605	BOCA comum 160-400 S/ROSCAR REF. 2"	0,5435	0,02243	7,095	12
1005606	BOCA comum 160-400 S/ROSCAR REF. 2 1/2"	0,546	0,03129	7,125	12
1005607	BOCA comum 160-400 S/ROSCAR REF. 3"	0,608	0,02243	7,78	12
1005608	BOCA comum 160-400 S/ROSCAR REF. 4"	0,65725	0,03129	8,46	12





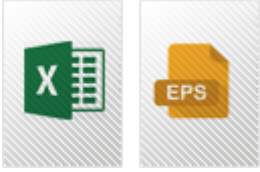
ITEM 145 | Boca saída r/f

CÓDIGO	d	f tubo	PESOS	A	B	PN	TIPO ROSCA
05600	1/2"	160-200-225-250-315-400	546	160	16	PN6	BSP
05601	3/4"	160-200-225-250-315-400	526	160	19	PN6	BSP
05602	1"	160-200-225-250-315-400	506	160	22	PN6	BSP
05603	1 1/4"	160-200-225-250-315-400	487	160	26	PN6	BSP
05604	1 1/2"	160-200-225-250-315-400	467	160	31	PN6	BSP
05605	2"	160-200-225-250-315-400	530	160	38	PN6	BSP
05606	2 1/2"	160-200-225-250-315-400	566	160	44	PN6	BSP
05607	3"	160-200-225-250-315-400	561	160	51	PN6	BSP
05608	4"	160-200-225-250-315-400	668	160	61	PN6	BSP





Documentação do Produto



Certificados do Produto

Certificados da Empresa

