



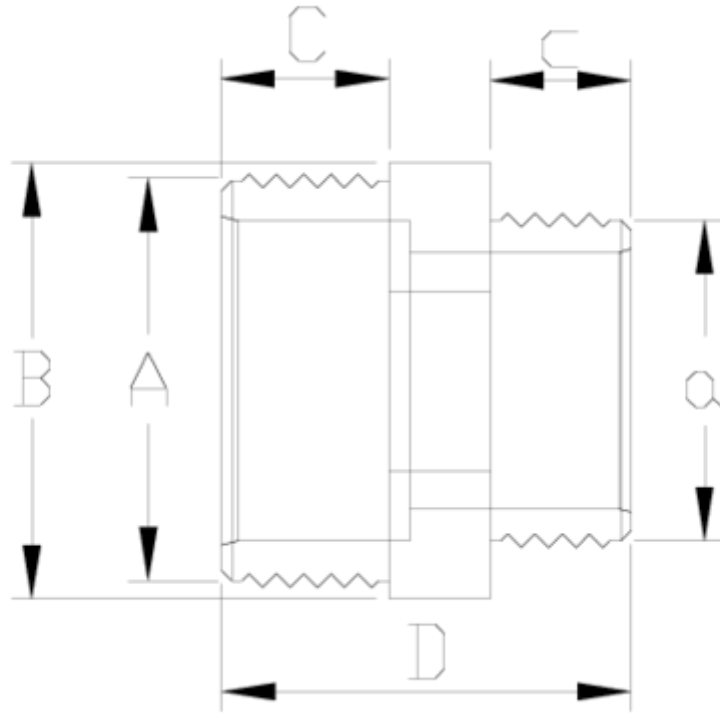
Acessórios de pressão PVC-U

Machones m-m reduzido PVC blanco ITEM 048



REFERÊNCIA	DESCRIÇÃO	Peso líquido	Volume (m ³)	Peso bruto	Unidades por lote
1002712	Niple M/M RED. 1 1/2"-1/2" BLANCO	0,058283	0,01553	6,155	100
1002713	Niple M/M RED. 1 1/2"-3/4" BLANCO	0,06	0,01553	6,387	100
1002714	Niple M/M RED. 1 1/2"-1" BLANCO	0,062	0,01553	6,587	100
1002715	Niple M/M RED. 1 1/2"-1 1/4" BLANCO	0,068	0,01553	7,187	100
1002716	Niple M/M RED. 2"-3/4" BLANCO	0,106746	0,02244	5,825	50
1002717	Niple M/M RED. 2"-1" BLANCO	0,093	0,02244	5,056	50
1002718	Niple M/M RED. 2"-1 1/4" BLANCO	0,096	0,02244	5,206	50
1002719	Niple M/M RED. 2"-1 1/2" BLANCO	0,113946	0,02244	6,185	50
1002720	Niple M/M RED. 3/4"-1/2" BLANCO	0,02288	0,00473	2,3341	100
1002721	Niple M/M RED. 1-1/2" BLANCO	0,0312	0,00892	3,285	100
1002722	Niple M/M RED. 1"-3/4" BLANCO	0,03432	0,00892	3,597	100
1002723	Niple M/M RED. 1 1/4"-1/2" BLANCO	0,045977	0,01516	3,775	75
1002724	Niple M/M RED. 1 1/4"-3/4" BLANCO	0,04888	0,01516	3,9264	75
1002725	Niple M/M RED. 1 1/4"-1" BLANCO	0,052	0,01516	4,1604	75





ITEM 048 | Machones m-m reducido PVC blanco

Codigo	A-a	Peso (g)	B	c	C	D	PN	ROSCA
02720	3/4"-1/2"	19	34	11	16	42	PN10	BSP
02721	1"-1/2"	30	44	11	19	47	PN10	BSP
02722	1"-3/4"	33	44	16	19	47	PN10	BSP
02723	1 1/4"-1/2"	44	50	11	21	49	PN10	BSP
02724	1 1/4"-3/4"	47	50	16	21	50	PN10	BSP
02725	1 1/4"-1"	50	50	19	21	53	PN10	BSP
02712	1 1/2"-1/2"	58	60	11	22	49	PN10	BSP
02713	1 1/2"-3/4"	59	60	16	22	51	PN10	BSP
02714	1 1/2"-1"	62	60	19	22	54	PN10	BSP
02715	1 1/2"-1 1/4"	67	60	21	22	56	PN10	BSP





ITEM 048 | Machones m-m reducido PVC blanco

02716	2"-3/4"	90	70	16	26	56	PN10	BSP
02717	2"-1"	93	70	19	26	60	PN10	BSP
02718	2"-1 1/4"	95	70	21	26	61	PN10	BSP
02719	2"-1 1/2"	98	70	22	26	61	PN10	BSP

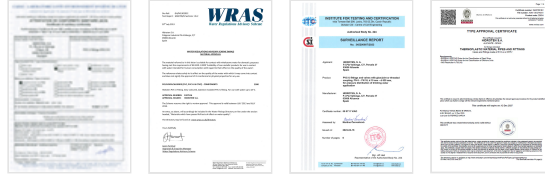




Documentación del Producto



Certificados del Producto



Certificados de la Empresa

